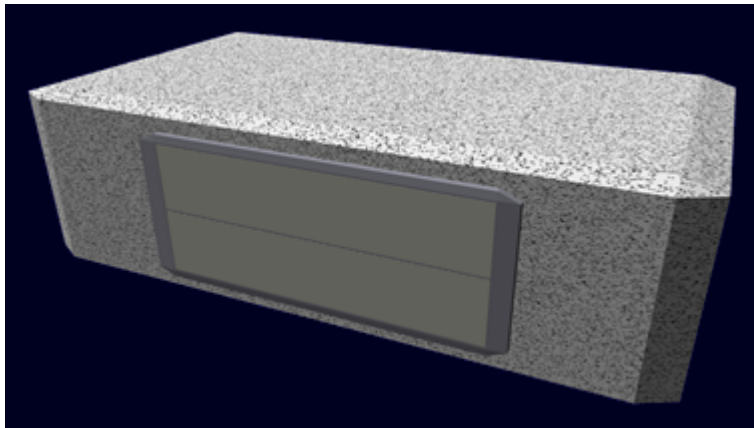


Ge-Y1-M3100 - Cargo Module

The Ge-Y1-M3100 - Cargo Module is an option for the [Ge-Y1-1a - Henkei-class Starship](#) that was first manufactured in [YE 31](#).



Statistical Data

General

Class: Module Nomenclature: Ge-Y1-M3100 Type: Cargo Designers: [Geshrinari Shipyards](#) Manufacturer: [Geshrinari Shipyards](#) **Price:** 4,000 KS (Without customization)

Dimensions

Length: 30 meters (269 feet) Width: 18 meters (164 feet) Height: 9 meters (29.52 feet) Decks: 1 (8 meters each)

Features

Cargo bay features

This module provides an additional 28m x 16m of cargo space two decks high. This module contains [typical cargo area features](#).

Catwalks

There is a network of catwalks that go around the module to allow access from the upper deck to the floor of the module.

Multifunction Cargo Door

Depending on the type of cargo to be loaded, the cargo door can operate two ways. For cargo that stored in [Standard Starship Cargo Containers](#) then the inner doors can be opened and the cargo loaded by forklifts. Then moved along rollers on the lower door. For oversized cargo like vehicles, the enter door assembly swings down to serve as a ramp.

Systems

Emergency Systems

- Auto fire suppression (AFS) - The AFS is available in all parts of the *Henkei*. When activated it deploys a fire suppressing gas. This gas reduces the available oxygen so personnel in an affected area should leave, or don a portable air tank. Each compartment has sensors to detect smoke and or heat. When activated the system triggers a shipwide alarm over the intercom giving the location of the fire.
- Chemical extinguishers - These are present for manual use on electrical and metal fires.

Ge-Y1-A3101 - Armored Hull

The Ge-Y1-M3100 module uses a [Geshrinari Shipyards](#) designed armor hull. The hull is composed .5 meters of overlapping [durandium plating](#). The frame of the module is [Durandium Alloy](#).

Ge-Y1-E3104 - Intercom System add-on

The Ge-Y1-E3104 connects to the [Ge-Y1-E3103 - Intercom System](#) aboard the *Henkei*. It allows all compartments on the module to tie into the system.

Ge-Y1-M3105 - Module Connection Points

The Ge-Y1-M3105 is the standard mating unit for connecting to the Ge-Y1-M3104 on the *Henkei*. There are two of these on the module they provide the physical, and electrical connectivity for the to the [Ge-Y1-1a - Henkei-class Starship](#).

From:
<https://wiki.stararmy.com/> - **STAR ARMY**

Permanent link:
https://wiki.stararmy.com/doku.php?id=corp:geshrinari_shipyards:henkei-class_starship:ge-y1-m3100&rev=1688947691

Last update: **2023/12/21 01:14**

