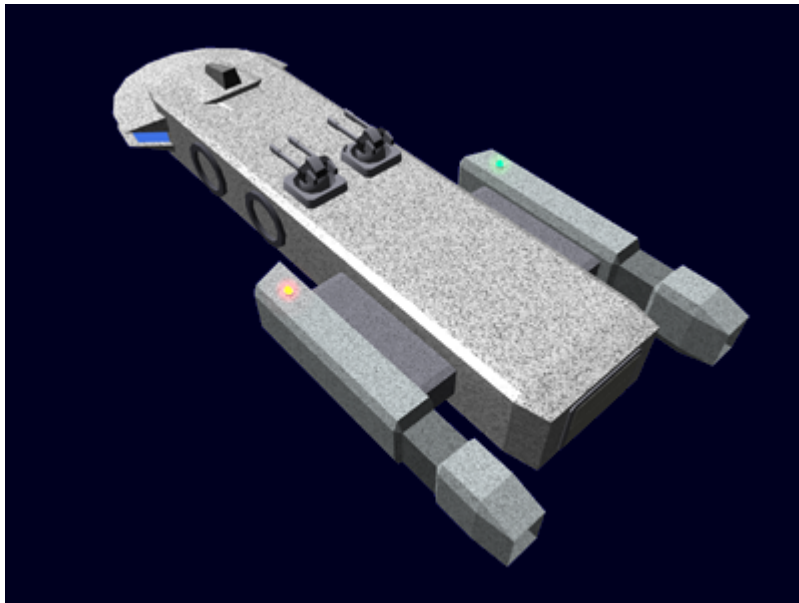


Ge-Y1-1a - Henkei-class Starship

The *Henkei* (Variation) is a multi-role starship that was first manufactured in [YE 31](#).



About the Henkei

The *Henkei* is a basic starship that can be tailored to meet the specific needs of the owner. The design uses a standard frame that they attach modules onto.

History

The *Henkei* came about as [Geshrinari Shipyards](#) sought to make their product line more profitable. They developed a basic starship frame that could be customized by adding various standard components. This allowed them to produce ships for a wide range of customers at a better profit.

Statistical Data

General

Class: *Henkei-class* Nomenclature: Ge-Y1-1a Type: Multi-role Designers: [Geshrinari Shipyards](#)
Manufacturer: [Geshrinari Shipyards](#) **Price:** 20,000 KS (Without customization)

Common Configurations

These are the most common *Henkei* configurations.

- [Ge-Y1-2a - Cargo runner variant](#) for customers wanting greater cargo carrying capabilities.
- [Ge-Y1-3a - Passenger variant](#) for customers wanting greater passenger carrying capabilities.
- [Ge-Y1-4a - Mining variant](#) for customers looking to make money harvesting minerals from asteroids.
- [Ge-Y1-5a - Patrol craft variant](#) for government agencies needing to enforce laws.

Other configurations are possible by mixing the various modules.

Crew and Accommodations

Crew: 6 (Can be operated by a single person) **Passengers:** 12 Maximum Capacity: There are accommodations for 18 personnel **Emergency Capacity:** 50 people can fit aboard in an emergency, but the ship would be extremely cramped.

Dimensions

- Length: 85 meters (269 feet)
- Width: 33 meters (108 feet)
- Height: 13 meters (42.64 feet)
- Decks: 2 (4 meters each)

Propulsion and Range

Speeds

The *Heneki* is a nimble vessel.

- **Atmospheric:** Mach 5

- **Combined Field System/Continuum Distortion Drive:**
 - **Minimum:** Resting motionless
 - **Sublight:** .3c (~89,937 kilometers per second)(~55,884 miles per second)
 - **Maximum Speed:** 12,500c (~1.43 ly/h)
- **Hyperspace Drive:** 394,470c (0.75 ly/m)

Durability and Maintenance

Service Lifespan: Estimated 20 years of constant use, possibly longer with refits.

Refit Cycle: Frequent minor updates through refits once every four to five years.

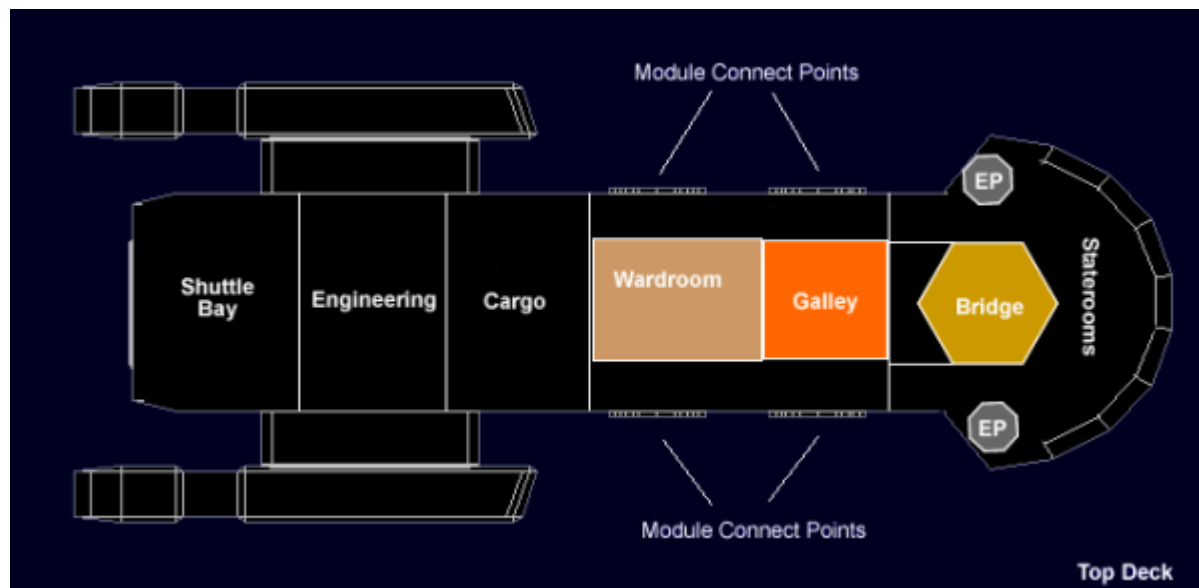
Damage Capacity

See [Damage Rating \(Version 3\)](#) for an explanation of the damage system.

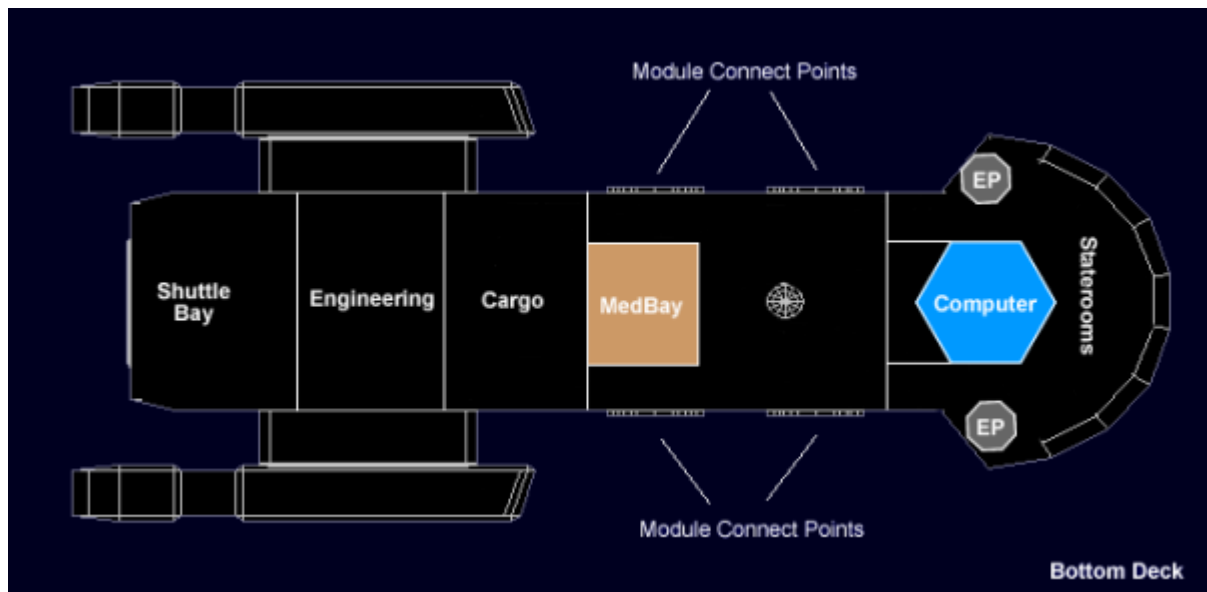
- Hull: 12
- Shields: 12 (Threshold 2)

Inside the Henkei

Upper Level



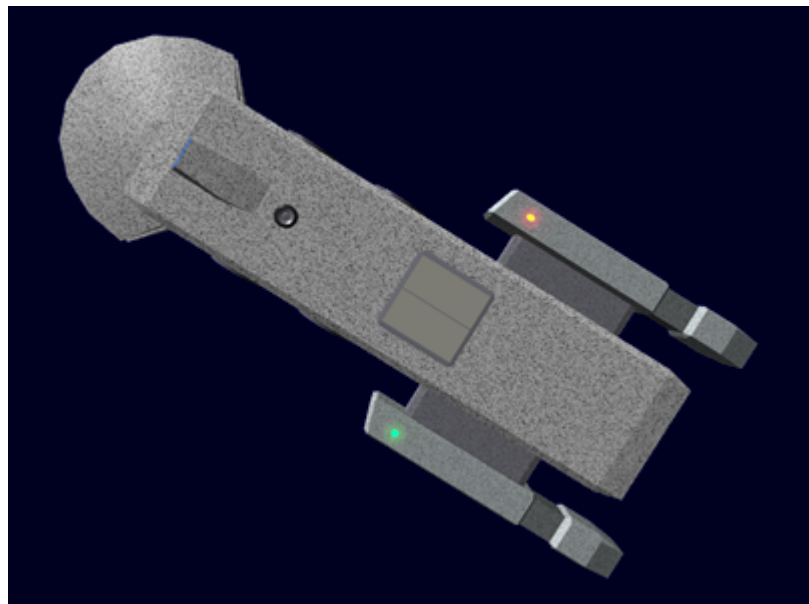
Lower Level



Deck	Sections
One	Crew Staterooms (6), Bridge, Escape Pods(2), Galley, Wardroom, Cargo Bay, Engineering, Shuttle bay
Two	Pax Staterooms (6), Computer room, Escape Pods(2), Free space, Medbay,Cargo Bay, Engineering, Shuttle bay

Airlock

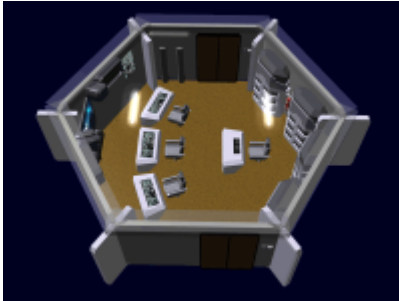
The *Henkei* [airlock](#) is located ventrally. It is accessed from the lower deck. The floor of the airlock lowers the occupants to the ground or lifts them into the lock. It is otherwise similar to [standard airlocks](#).



Avionics

The *Henkei* avionics are mounted above the bridge and below the computer core. This was done to give the sensors the clearest field of operation.

Bridge



The *Henkei* uses a [Geshrinari Shipyards standard bridge](#). It is located on the upper deck. The bridge is restricted to crew members only. A corridor goes around the bridge giving access to the crew quarters.

Cargo Bay

The *Henkei* cargo bay is located just forward of the engineering section. Cargo is loaded through a pair of doors on the bottom. It contains [Cargo Area](#) features. The doors serve as cargo elevators.

Computer room

The *Henkei* [Geshrinari Standard Computer Room](#) is located on the bottom deck, directly beneath the bridge.

Engineering

The *Henkei* has a [Geshrinari Standard Engineering](#) that extends across both decks. It is situated between the shuttle bay and the cargo bay.

Free Space

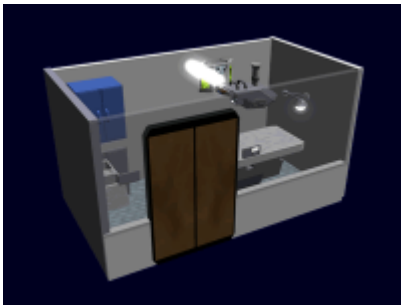
The area around the airlock is free space that the owner can use for whatever purpose they want.

Galley

The *Henkei* galley has a [Geshrinari Galley](#). It is intentionally larger than what is needed for the base version, to accommodate extra personnel from the modules. It is located on the upper deck.

Medbay

The basic medical bay for the *Henkei* is a [Geshrinari Medical Niche](#). It is located on the bottom deck near the airlock.



For a fee of 1,500 [KS](#) customers can upgrade the medbay with a civilian [Ke-J1-E3102 ABMU](#) at the time of purchase. After market installation costs 2,000 [KS](#).

Passageways

Horizontal movement on the *Henkei* is by standard passageways similar to these [passageways](#). There are two lateral passageways.

Vertical movement is done via spiral staircases.

Wardroom

The Wardroom of the *Henkei* is a multifunction room, serving as a crew meeting place, lounge and dining area. It is located on the upper deck adjacent to the galley.

Ship's Locker

There are two ship lockers on the *Henkei*. The first is on the upper deck behind the bridge. This is where small arms and other restricted equipment is stored. The other ship's locker is located on the lower deck, behind the computer room facing the airlock. Access to both is normally restricted to crew only.

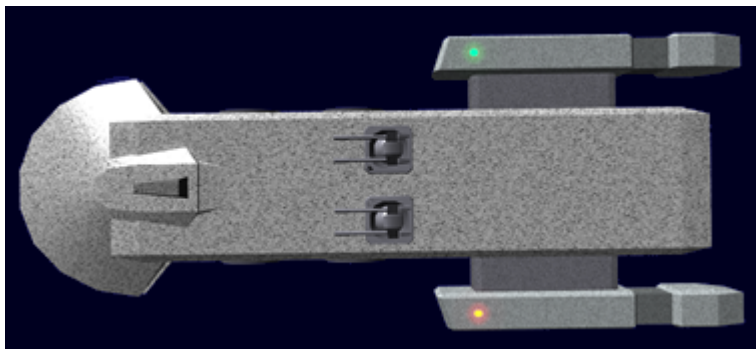
Shuttle bay

The *Henkei* shuttle bay is located in the stern of the ship and covers both decks. It is 14.5 meters deep and 16 meters wide. There are hatches to allow access to both the lower and upper decks. Catwalks are present on the upper level.

Staterooms

The *Henkei* has a total of twelve (12) staterooms. The six single occupancy crew quarters are on the upper level. They are located in the front of the upper deck arcing around the corridor. There are six dual capacity staterooms for passengers on the bottom level. They are located in the front of the lower deck arcing around the corridor. Each stateroom has its own toilet and shower.

Ship Systems



Ge-Y1-A3100 - Armored Hull

The *Henkei* uses a [Geshrinari Shipyards](#) designed armor hull. The hull is composed .5 meters of overlapping [durandium plating](#). The frame of the ship is [Durandium Alloy](#). All windows on the *Henkei* are made of [Transparent Durandium](#).

Ge-Y1-S3100 - Combined Field System

The *Henkei* primary defense is a [Geshrinari Combined Field System](#).

Computer and Sensor Systems

For ships sold to the [Star Army of Yamatai](#) they come equipped with a [Kessaku Systems Compact Integrated Electronics System \(CIES\)](#) computer and sensors.

Ge-Y1-E3100 - Computer

For ships sold to organizations outside of the [Star Army of Yamatai](#), [Geshrinari Shipyards](#) provides a [Ge-Y2-E3300 - Hogosha Quantum Computer System](#).

The *Henkei* uses a [Geshrinari Shipyards](#) designed computer based on the [Compact Integrated Electronics System \(CIES\)](#), it runs the Kessaku OS.

Ge-Y1-E3101 - Sensors

- Unidirectional Sensors - include variable wide-band imaging clusters, long-range gravimetric and magnetic resonance and distortion sensors and spectrometers. These sensors face the front of the ship and have a range up to five light-years.
- Ultra-Wide Band Radar - This radar system is designed to detect and track objects in close proximity to the ship. System has a range of 1 light second

Ge-Y1-E3102 - Communications

- Radio - Full spectrum, Dual-Modulation, no technical range, limited to light-speed, delays occur at long range.
- Subspace/Hyperspace - A standard means of faster-than-light communication.

Ge-Y1-E3104 - Psionic Signal Controller

The *Henkei* is equipped with a [Geshrinari Psionic Signal Controller](#).

Emergency Systems

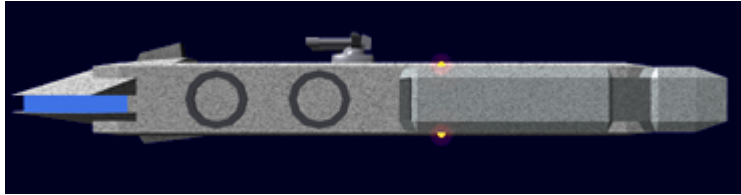
- [Geshrinari Blast Shutters](#) - which seal major sections of the ship.
- The *Heitan* is equipped with the [Ge-Y1-E3104 - Automatic Fire Suppression System](#).
- Chemical extinguishers - These are present for manual use on electrical and metal fires.
- Ge-XS-3000 Escape pods - the *Henkei* carries four with capabilities similar to [Star Army Escape Pod, Type 29](#). Two of them are on the upper deck on either side of the bridge. The other two are located on the lower deck on either side of the computer room. Can be replaced with [Ge-X3300 - Type 33 Escape Pod](#).

Ge-Y1-E3103 - Intercom System

The *Henkei* is equipped with a [Ge-Y1-E3103 - Intercom System](#).

Ge-Y1-M3104 - Module Connection Points

There are four of these on the *Henkei* they provide the physical, electrical and life support connectivity for the *Henkei* [modules](#). When a module is attached the area inside of the point is open to allow free movement between the primary section and the attached modules. [Geshrinari Shipyards](#) recommends a detailed inspection of the connection points annually.



Ge-Y1-V3100 - Life Support System

The *Henkei* has a [Ge-Y1-V3100 - Life Support System](#).

Power Systems

Ge-Y1-G3100 - Aether Generator

The primary power source for the *Henkei* is a high-output [Aether](#) generator. It provides power for all primary ship systems except for the weapons.

Ge-Y1-G3101 - Fusion Reactor

The *Henkei* secondary power source is a pair of fusion reactors. They provide power for the weapons. They also provide power for life support and auxiliary engines if primary power fails.

Propulsion

Ge-Y1-P3100 Combined Field System

The *Henkei* uses a [Geshrinari Combined Field System](#) for primary propulsion.

Ge-Y1-P3101 - Hyperdrive

The *Henkei* uses a [Geshrinari Hyperspace Fold Drive](#) for long distance travel.

Ge-Y1-P3102 Continuum Distortion Drive

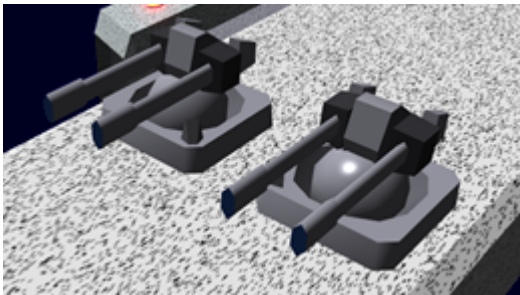
The *Henkei* uses two [Geshrinari Continuum Distortion Drives](#) mounted in parallel for STL and atmospheric travel.

Ge-Y1-P3103 - Maneuvering Thrusters

The *Henkei* uses [Geshrinari Maneuvering Thrusters](#) clusters for docking and station keeping.

Ge-Y1-W3100 - Anti-Ship Turrets

The *Henkei* has two [Ge-Y1-W3100 - Anti-Ship Turrets](#) mounted on the top of the ship. [Damage Rating \(Version 3\)](#) 2 SDR



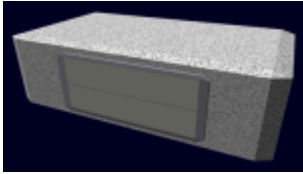
Henkei Modules

There are a variety of modules that allow customers to customize the *Henkei* for their specific needs. The modules share the following traits:

- Primary power comes from the *Henkei*.
- Primary life support comes from the *Henkei*.
- Expands the intercom system with rooms on contained in it.
- Can be jettisoned in an emergency.

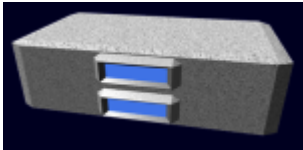
These are the standard modules available:

Ge-Y1-M3100 - Cargo



This module expands the cargo capacity of the ship. View [details about the cargo module](#).

Ge-Y1-M3101 - Passenger



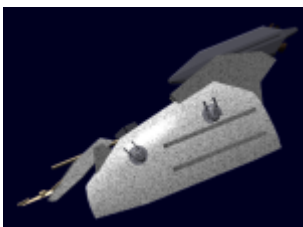
This module expands the passenger capacity of the ship. View [details about the passenger module](#).

Ge-Y1-M3102p - Patrol (Port)



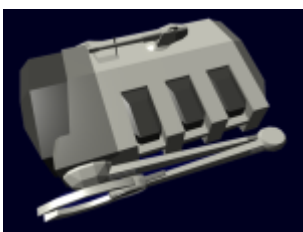
This module expands the offensive capacity of the ship. View [details about the patrol module](#).

Ge-Y1-M3102s - Patrol (Starboard)



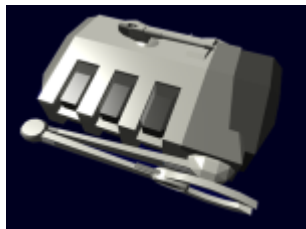
This module expands the offensive capacity of the ship. View [details about the patrol module](#).

Ge-Y1-M3103p - Mining



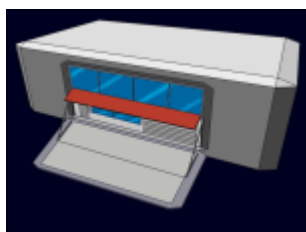
This module gives the ship the ability to harvest asteroids. View [details about the mining module](#).

Ge-Y1-M3103s - Mining



This module gives the ship the ability to harvest asteroids. View [details about the mining module](#).

Ge-Y1-M3500 - Building/Storefront



See: [Ge-Y1-M3500 - Building Module](#)

Standard Equipment

- 1 [EM-G16-1B Medical Kit](#)
- 1 [EM-G17-1a Basic Tool Kit](#)

OOC Notes

Authored by [Nashoba](#) Jul 10, 2009 Artwork by [Nashoba](#)

Submission Approved by [Wes](#) on Jul 11, 2009. [Forum Thread](#).

Products & Items Database	
Product Categories	starships
Product Name	Henkei Class Starship
Nomenclature	Ge-Y1-1a
Manufacturer	Geshrinari Shipyards

Products & Items Database

Price (KS)	20,000.00 KS
-------------------	--------------

From:

<https://wiki.stararmy.com/> - **STAR ARMY**

Permanent link:

https://wiki.stararmy.com/doku.php?id=corp:geshrinari_shipyards:henkei-class_starshipLast update: **2023/12/21 00:57**