

Ge-Y2-1a - Hanto-Class Starship

The *Hanto-Class* is a small configurable pleasure craft, designed to be as a yacht or other sort of conveyance. It became available in [YE 33](#).



About the Hanto

The *Hanto-Class* is a compact starship, designed to be easily customer customizable. It features quarters the equivalent of nicer hotel rooms for its passengers. [Geshrinari Shipyards](#) designed this ship to serve easily as a corporate transport, a recreational vessel, or even a common man's yacht.





History

The *Hanto-Class* came about when [Geshrinari Shipyards](#) was contacted by [Ise Katae](#) regarding a customizable starship for the [Ise Clan](#) hunting business. The original request was for a ship that would be ideal for taking passengers on safari to other worlds to offer them different hunting experiences. During the discussions, the idea to make the craft easily configurable was agreed upon which leaves parts of the ship free for the owner to customize.

Appearance

The Hanto-Class is a flattened cylinder with rounded ends. It has four externally mounted plasma drives in the aft. It has two wings which help improve the flight performance in atmosphere. There are two airlocks visible on the lower deck just before the leading edge of the wing. The standard color scheme for the Hanto-Class is white. There are three spacious windows on the bow, and six smaller windows on either side. There are four maintenance hatches on the top and bottom of the hull, and the escape pod cover is visible on the top. Additionally the four landing pads are visible on the bottom, and the cargo bay doors are clearly visible on the lower stern.

Statistical Data

General

Class: *Hanto*-class Nomenclature: Ge-Y2-1a Type: Hunter Designers: [Geshrinari Shipyards](#) Manufacturer: [Geshrinari Shipyards](#) **Price:** 76,250 [KS](#) (Without customization, or weapons)

Crew and Accommodations

- Crew: 8 - 16 (Can be operated by a single person)
- **Owner:** 1
- **Passengers:** 16 - 32
- Maximum Capacity: 49 There are accommodations for 49 personnel
- **Emergency Capacity:** 150 people can fit aboard in an emergency, but the ship would be extremely cramped.

Dimensions

- Length: 64 meters (210 feet)
- **Width (Fuselage):** 32 meters (105 feet)
- **Width (Overall):** 42.4 (139 feet)
- Height: 15.3 meters (50 feet)
- Decks: 2 (4 meters each)

Speeds

The *Hanko* is a nimble vessel.

- **Atmospheric:** 4,900 km/h, or 3.044.8 mph (Mach 4)
- **Combined Field System/Continuum Distortion Drive:**
 - **Minimum:** Resting motionless
 - **Sublight:** .3c (~89,937 kilometers per second) (~55,884 miles per second)
 - **Maximum Speed:** 12,500c (~1.43 ly/h)
- **Hyperspace Drive:** 394,470c (0.75 ly/m)

Durability and Maintenance

Service Lifespan: Estimated 20 years of constant use, possibly longer with refits.

Refit Cycle: Frequent minor updates through refits once every four to five years.

Damage Capacity

See [Damage Rating \(Version 3\)](#) for an explanation of the damage system.

- Hull: 8
- Shields: 8 (Threshold 1)

Inside the Hanto-Class

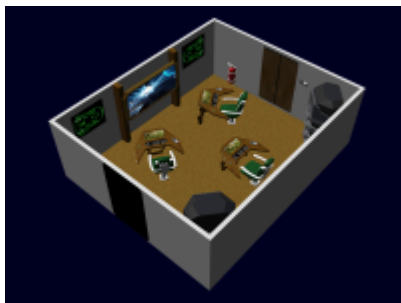


Airlocks

The *Hanto* is equipped with two [Geshrinari Airlocks](#). They are located on the lower deck just under the leading edge of the wings. Due to the configuration used on the *Hanto* the exterior door swings inward.

Bridge

The *Hanto* uses a [Geshrinari Compact Bridge](#) located on the upper deck.

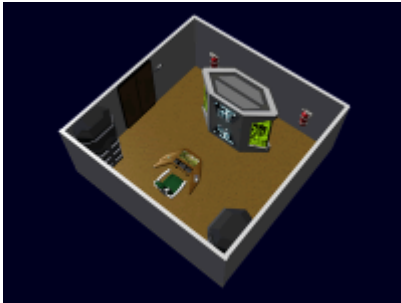


Cargo Hold / Vehicle Bay

The *Hanto* has a [Geshrinari Cargo Bay](#) and [Geshrinari Vehicle Bay](#) located on the lower deck; in the bow. It can easily hold up to eight medium [Standard Starship Cargo Containers](#) and 12 small [SSCC](#) without putting any on the lift. Lift is shown with two [EM-K4 "Zephyr" Air Car](#)

Computer Room

The *Hanto* has a [Geshrinari Standard Computer Room](#) located on the lower deck.



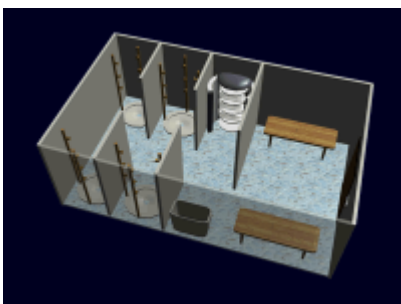
Crew Quarters

The *Hanto* has eight [Geshrinari Standard Crew Quarters](#) located on the lower deck. Under normal operation this is sufficient for the eight crew members. Depending on circumstances the crew can be increased to sixteen.



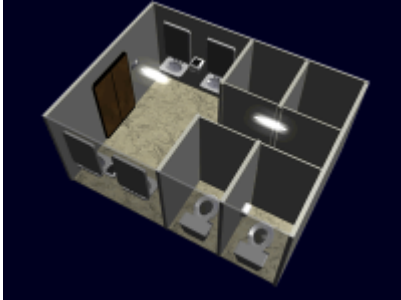
Baths

There are two [Geshrinari Common Baths](#) near the crew quarters on the lower deck. Located between the [crew quarters](#)



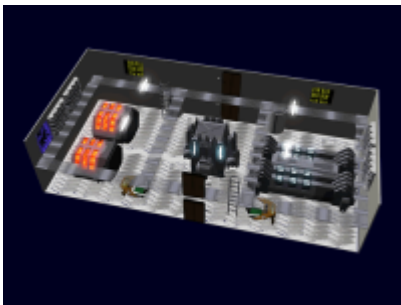
Toilets

There are two [Geshrinari Common Toilet](#) on the lower deck for use by the crew. Located between the [crew quarters](#)



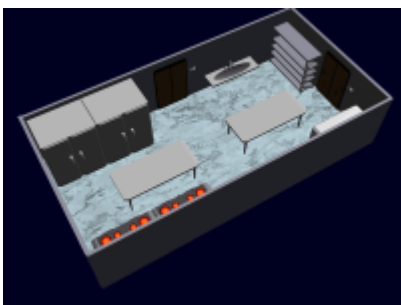
Engineering

The *Hanto* has a [Geshrinari Standard Engineering](#) in the aft section of the ship, it spans both decks.



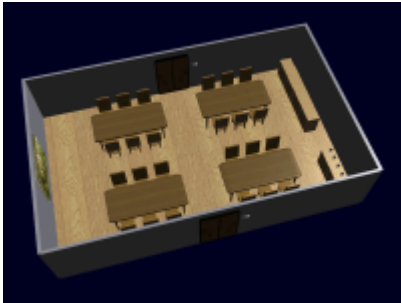
Galley

The *Hanto's* [Geshrinari Galley](#) is located on the port side next to the [Geshrinari Dining Room](#). It is connected to a walk-in freezer for food storage. On the starboard side of the [dining room](#) is the [Geshrinari Scullery](#)



Dining Room

The *Hanto* has a [Geshrinari Dining Room](#) in the aft of the upper deck.

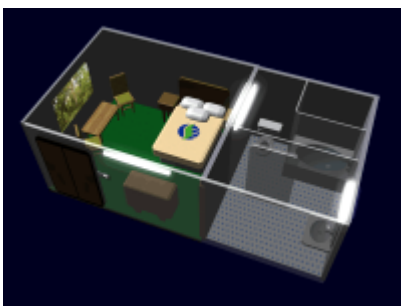


Lounge Room

The *Hanto-class* has a large lounge that runs the width of the bow. It has all the features of a [Geshrinari Lounge](#). Storage for unused items is done in a store room in the aft on the starboard side.

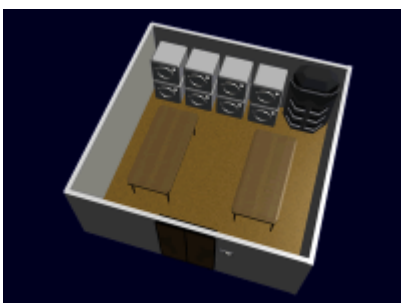
Guest Quarters

There are sixteen [Geshrinari Passenger Quarters](#) located on the upper deck. They are capable of handling up to two passengers each.



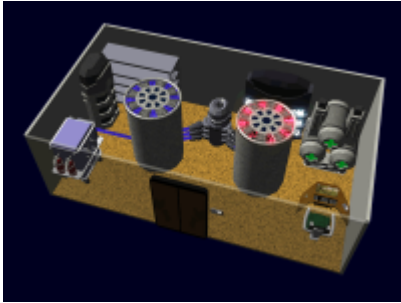
Laundry

There is a [Geshrinari Ship's Laundry](#) on the lower deck. Opposite the medical bay.



Life Support

Located on the lower deck to the starboard of the shuttle bay, is a [Geshrinari Life Support Room](#).



Medical Bay

The *Hanto* is equipped with an upgraded [Geshrinari Medical Bay](#), replacing one of the diagnostic beds with a civilian [Ke-J1-E3102 ABMU](#). It is located on the lower deck next to Engineering.



Owner's Suite

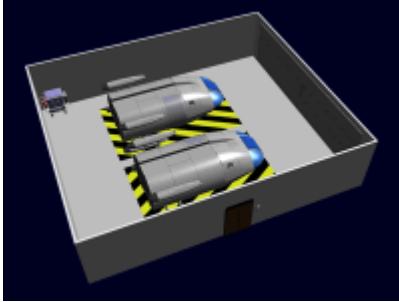
The *Hanto* features a luxurious room called the [Geshrinari Owner's Suite](#). The configuration of the suite is the same, but individual owners can customize the furnishing and features. The Owner's Suite is located on the upper deck on the port side of the bridge.



Shuttle bay

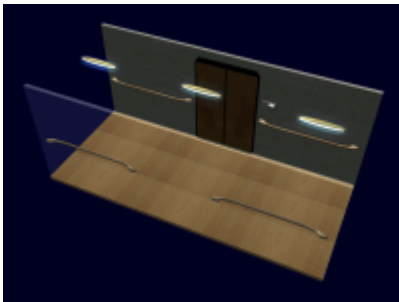
The *Hanto* is equipped with a [Geshrinari Standard Shuttle Bay](#) located on the lower deck in the stern. On

the port side is a storage area where parts and supplies for the shuttle and ship are stored.

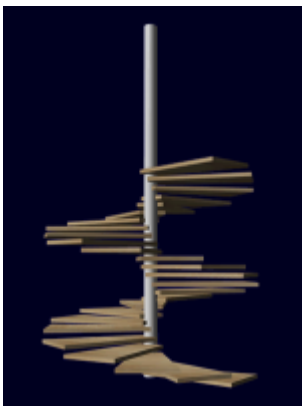


Passageways

Horizontal movement on the *Hanto* is by [Geshrinari Corridors](#).



Vertical movement is done via spiral staircases. There are four of them on the *Hanto*



There are [Geshrinari Maintenance Tunnels](#) beneath both of the decks.

Ship's Locker

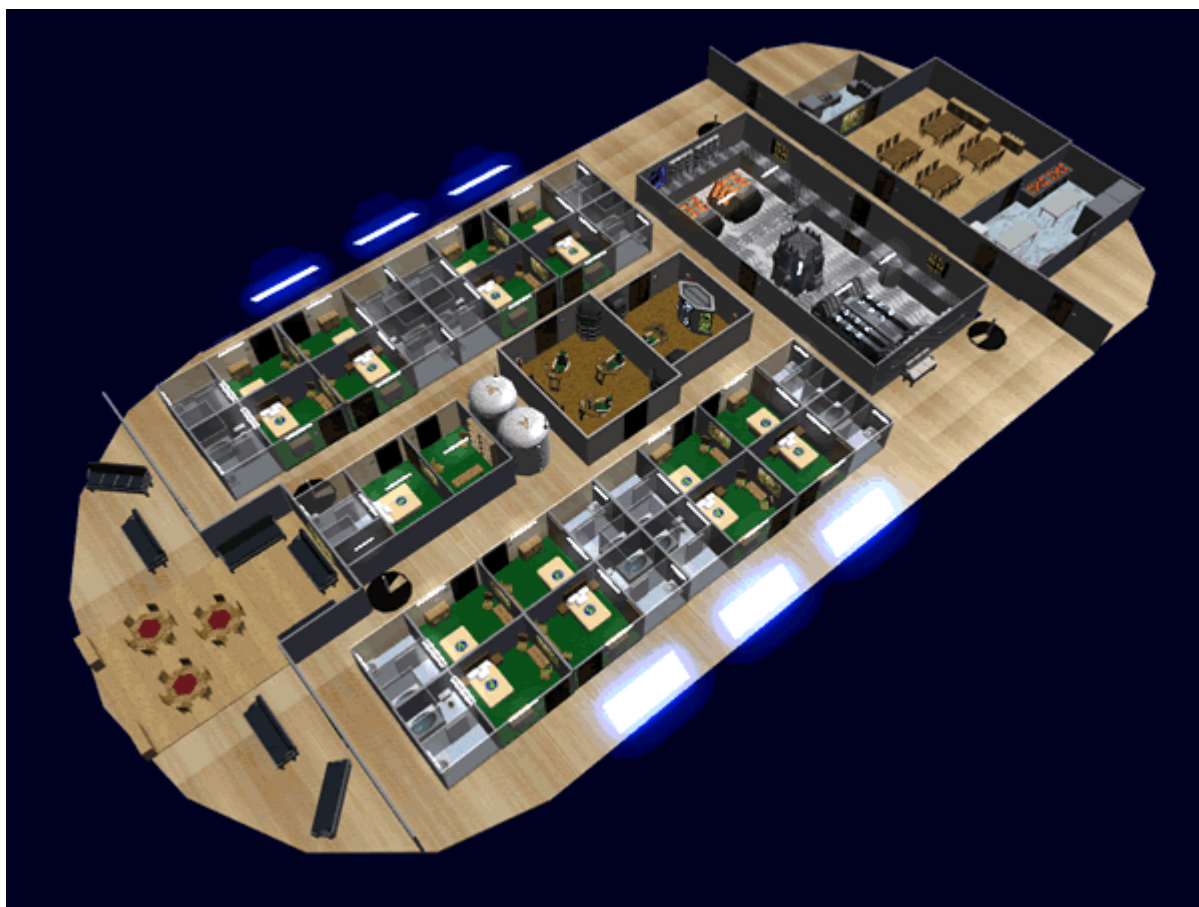
There are two small [Geshrinari Ship's Locker](#), located next to each of the airlocks.

Contents

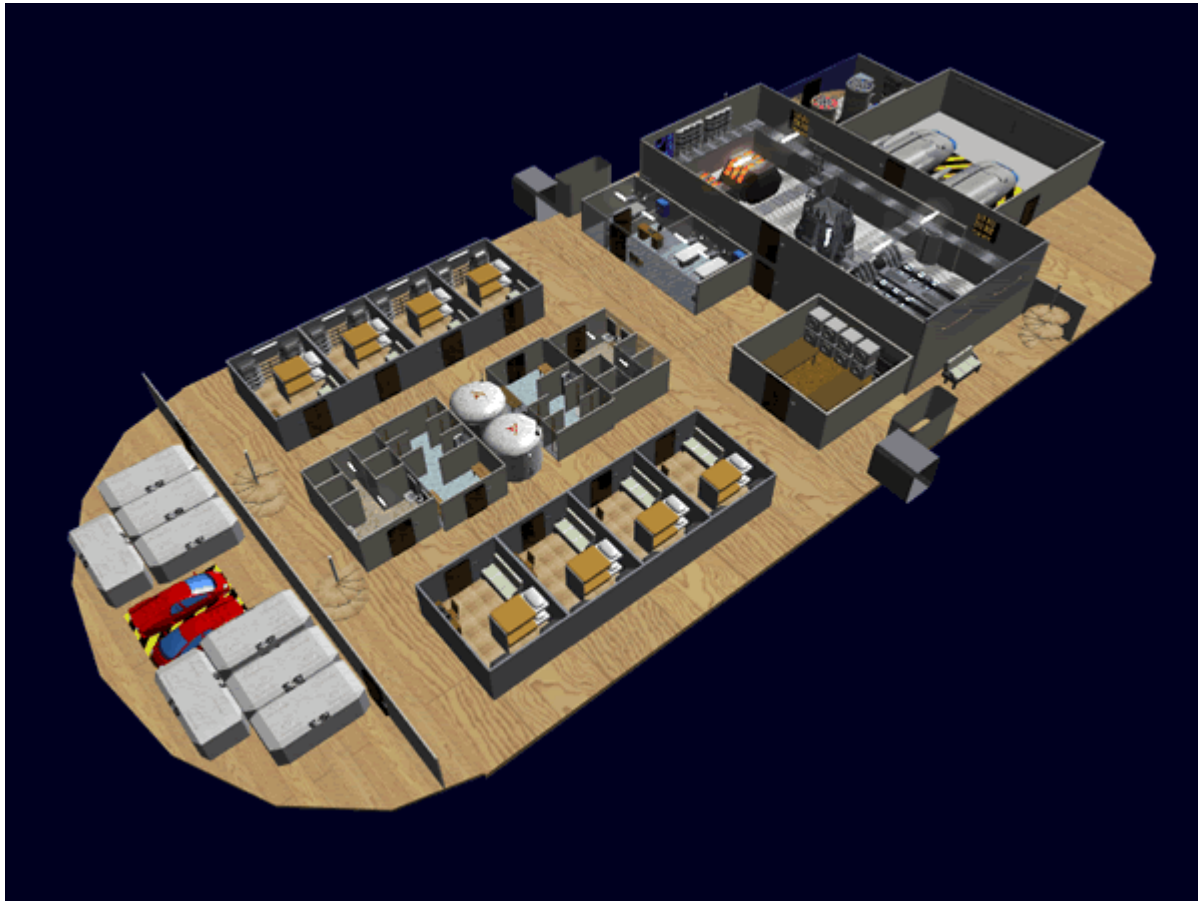
- 12 [EM-G1 Emrys Dusk Suit](#)
- 6 [Star Army Void Propulsion Pack, Type 31](#)
- 6 50ft cables
- Zero G toolkit

Deck Plans

Deck 1



Deck 2



Systems

Ge-Y2-A3300 - Armored Hull

The *Hanto* uses a [Geshrinari Shipyards](#) designed hull. The hull is composed .5 meters of overlapping [Osmiridium](#). The frame of the ship is [Durandium Alloy](#).

Ge-Y2-S3300 - Combined Field System

The *Hanto* primary defense is a [Combined Field System](#), based on [Ketsurui Fleet Yards](#) design.

Computer and Sensor Systems

The *Hanto* is equipped with the following equipment

Ge-Y2-E3300 - Computer

- The *Hanto* is equipped with a [Ge-Y2-E3300 - Hogosha Quantum Computer System](#).

Ge-Y2-E3301 - Sensors

- The *Hanto* is equipped with [Ge-Y2-E3301 - Standard Starship Sensors](#).

Ge-Y2-E3302 - Communications

The *Hanto* is equipped with the [Ge-Y2-E3302 - Communications Suite](#).

Ge-Y2-E3305 - Life Sciences

The *Hanto* is equipped with the [Ge-Y2-E3305 - Life Science Sensor Package](#).

Ge-Y2-E3306 - Fire Control

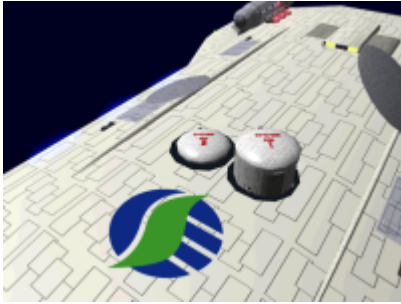
- The *Hanto* is equipped with a [Ge-Y2-E3306 - Fire Control System](#).

Ge-Y2-E3307 - Psionic Signal Controller

- The *Hanto* is equipped with a [Geshrinari Psionic Signal Controller](#).

Emergency Systems

- Emergency shutter - equipped with [Geshrinari Blast Shutters](#). Shutters are located at:
 - Bridge, Computer Room, Engineering (both levels), Shuttle bay, Staircases
 - Outer corridors amidship, doors to lounge and cargo hold
 - Inner corridors just aft of the escape pods, Ship's lockers
- The *Hanto* is equipped with the [Ge-Y1-E3104 - Automatic Fire Suppression System](#).
- [Geshrinari Damage Control Station](#)
- Chemical extinguishers - These are present for manual use on electrical and metal fires.
- Four [Ge-X3300 - Type 33 Escape Pods](#) are installed on the *Hanto* class. Two of them are on the upper deck. The other two are located on the lower deck.



GE-Y1-E3103 Intercom System

The *Hanto* is equipped with the [Ge-Y1-E3103 - Intercom System](#).

Ge-Y1-V3100 - Life Support System

The *Hanto* is equipped with a [Ge-Y1-V3100 - Life Support System](#).

Power Systems

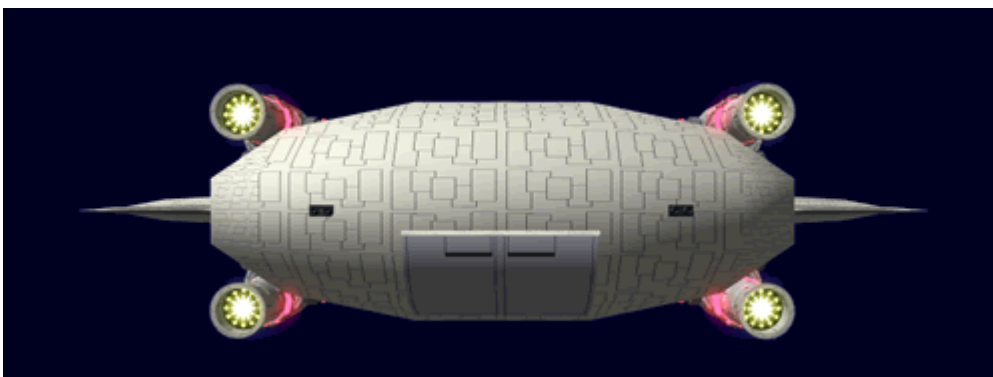
Ge-Y2-G3300 - Aether Generator

The primary power source for the *Hanto* is a high-output [Aether](#) generator. It provides power for all primary ship systems except for the weapons.

Ge-Y2-G3101 - Fusion Reactor

The *Hanto* secondary power source is a pair of fusion reactors. They provide power for the weapons. They also provide power for life support and auxiliary engines if primary power fails.

Propulsion



Ge-Y2-P3100 - Combined Field System

The *Hanto* uses a [Combined Field System](#) for short distance travel, based on [Ketsurui Fleet Yards](#) design.

Ge-Y2-P3101 - Hyperdrive

The *Hanto* uses a [Geshrinari Shipyards](#) designed [Hyperdrive](#) for long distance travel.



Ge-Y2-P3102 - Plasma Drive

The *Hanto* uses four [Geshrinari Turbo Plasma Drive](#) for STL and atmospheric travel.

Ge-Y2-P3103 - Maneuvering Thrusters

The *Hanto* uses fourteen [Geshrinari Maneuvering Thrusters](#) clusters for docking and station keeping.

Ge-Y2-M3300 - Shuttered Windows

The *Hanto* features windows made of [Transparent Durandium](#). The inner surface of the window is covered with several polarizing LCD layers that allows the window to automatically adjust to changing light levels. Each window is equipped with a [Durandium Alloy](#) shutter. The shutters are automatically engaged during combat and emergency situations.



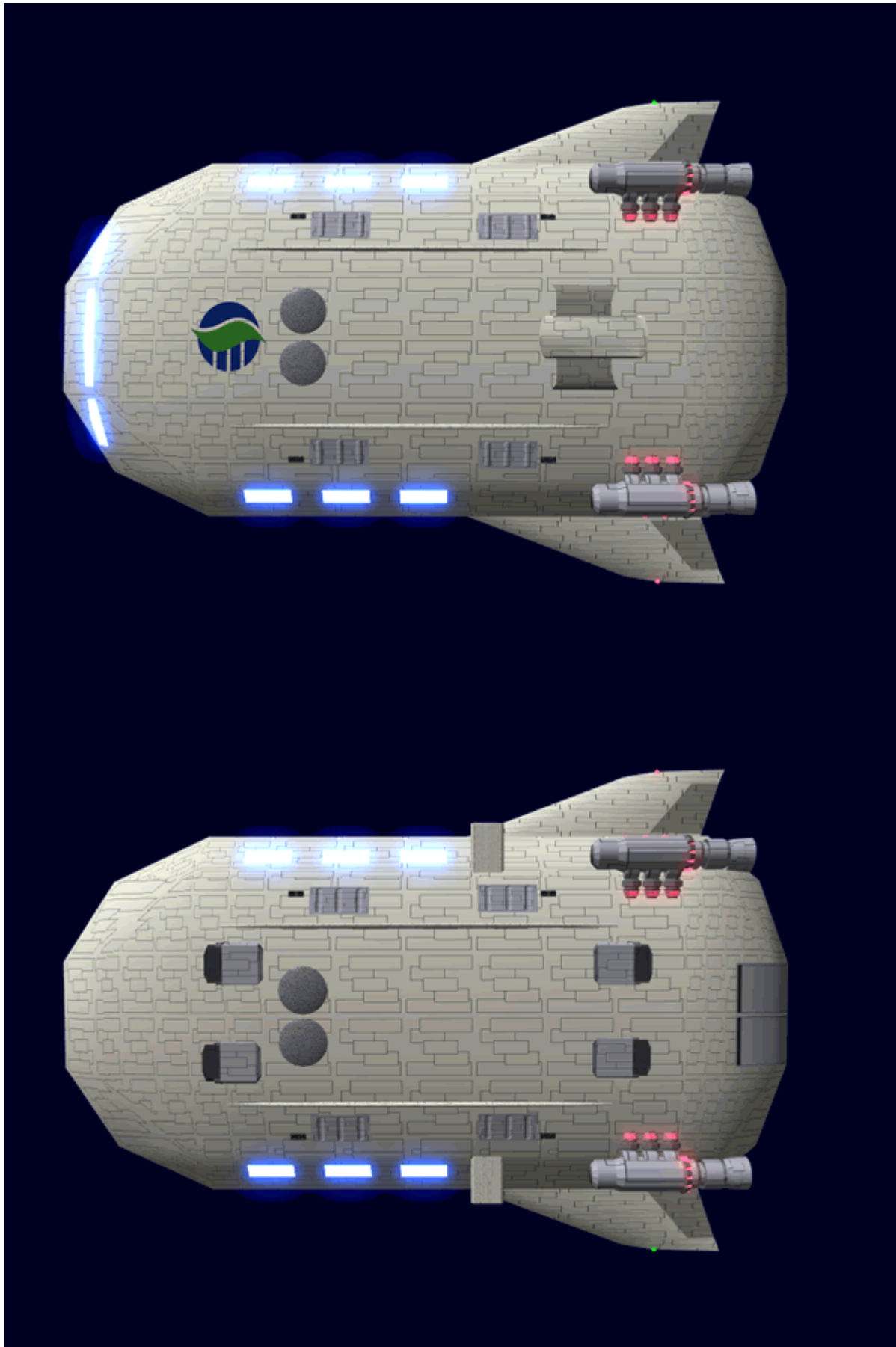
Ge-Y2-M3301 - UAV Hangar

The *Hanto* has a hangar module on the top of the ship for [EM-O1 "Tadayou" Series Droness](#).

Weapons

The *Hanto* does not come with any weapons for the base price. It features eight [hardpoints](#) for retractable weapon installations. The bays are shown on hull with their hatches.

- [Ge-Y2-W3300 - Anti-Armor Turrets](#) Price: 1,750 **KS** ea.
- [Ge-Y2-W3301 - Suisei Active Anti-Missile System](#) Price: 2,500 **KS** ea.
- [Ge-Y1-W3100 - Anti-Ship Turrets](#) Price: 1,500 **KS** ea.



Ship Vehicles

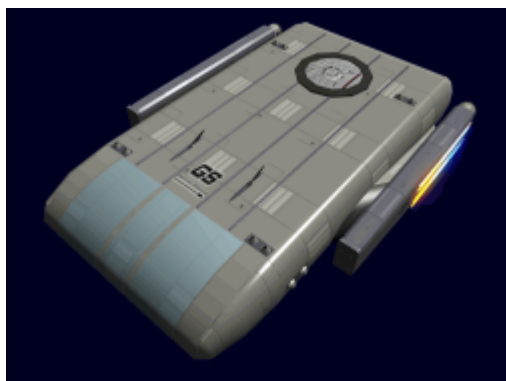
The *Hanto* can fit the following combinations in its shuttle bay.

- 2 [Ge-T2-1C - "Kuma" Shuttle](#)



or

- 1 [Ge-T1-1A - Transatmospheric Shuttle](#)



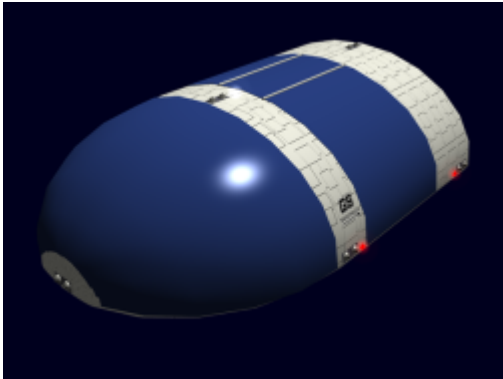
or

- 1 [Ge-T1-2a - Hikiuma-Class Shuttle](#)



or

- 4 [Ge-T5-1a Cho-Class Shuttle](#)



Inventory

- 2 [EM-G17-1a Basic Tool Kit](#)
- 10 [EM-G16-2a First Aid Kit](#)
- 2 [EM-G16-1B Medical Kit](#)
- 2 [EM-G17-2a Repair Kit](#)
- 2 [EM-G18-1a Ship Hull Patch Kit](#)

OOC Notes

Authored by [nashoba](#) Aug 26, 2011 Submission Approved by [SSharp](#) on Sep 29, 2011. [Forum Thread](#).

Products & Items Database	
Product Categories	starships
Product Name	Hanto-Class Starship
Nomenclature	Ge-Y2-1A
Manufacturer	Geshrinari Shipyards
Year Released	YE 33
Price (KS)	76 ,250.00 KS

From:
<https://wiki.stararmy.com/> - **STAR ARMY**

Permanent link:
https://wiki.stararmy.com/doku.php?id=corp:geshrinari_shipyards:hanto-class_starship&rev=1688822043

Last update: 2023/12/20 20:45

