

Ge-T1-2a - Hikiuma-Class Shuttle



The Ge-T1-2a is an upgrade to the venerable [Ge-T1-1A - Transatmospheric Shuttle](#). It became available in [YE 33](#)



About the Hikiuma

Hikiuma is available as either a new craft or a refit to an existing [Ge-T1-1A - Transatmospheric Shuttle](#). They kept the overall appearance of the shuttle but replaced the original nacelles with more streamlined ones and upgraded the propulsion and other systems. Hikiuma means draft horse in [Yamataian](#).

History

After years of selling the reliable [Ge-T1-1A - Transatmospheric Shuttle](#) Geshrinari Shipyards decided it was time to update the design. The effort consisted mostly of upgrading the various systems, to improve

the performance of the shuttle.

Appearance

The Hikiuma comes with a white hull, the new nacelles are mounted onto the original winglets on either side. There are the dorsal and ventral docking hatches, and a hatch on the port side. When the CDD are active they glow with a rainbow like effect. When they are inactive they appear dark red.

Statistics and Performance

General

- Class: Ge-T1-2A
- Type: Shuttle
- Manufacturer: [Geshrinari Shipyards](#)
- Production: Mass Production
- Designer: [Tamahagane Corporation R&D](#)
- **Price:** 24,000 [KS](#) new / 5,000 [KS](#) to upgrade from Ge-T1-1a

Passengers

Crew: 2 operators are recommended, but only one is required. Maximum Capacity: There are accommodations for 52 people (2 pilots, 48 passengers, and 2 additional crew)

Dimensions

- Length: About 11.5 meters (37.73 feet)
- Width: About 8 meters (26.25 feet)
- Height: Just over 2 meters (6.56 feet)
- Decks: 1

Propulsion and Range

Continuum Distortion Drive: 5,000c (~0.57 ly/h) **Sublight Engines:** .375c (~112,422 kilometers per second) (~69,856 miles per second) **Atmospheric:** 1,225 kph (761.3 mph) Mach 1 Range: 10 days of travel (about 137 light-years at maximum speed). Lifespan: 20+ Years Refit Cycle: Once every 5 years

Damage Capacity

See [Damage Rating \(Version 3\)](#) for an explanation of the damage system.

- Hull: 16 Armor Scale
- Shields: 20 (Threshold 4)



Details

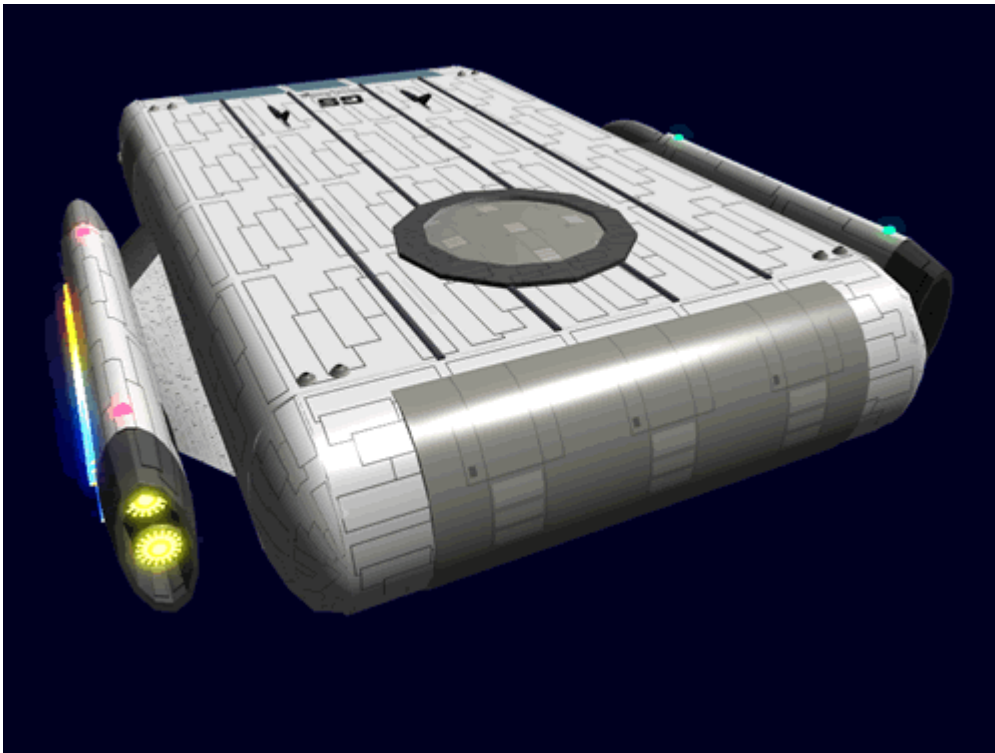
- Primary Purpose: Interstellar Transport
- Secondary Purpose: Planetary Landings
- Weapons: None

Systems



The Hikiuma is equipped with the following systems:

- [Ge-T8-E3104 - Communications Array](#)
- [Ge-T8-V3100 - Environmental System](#)
- [Ge-T8-E3100 - Basic Small Craft Sensor Package](#)
- [Ge-T8-E3103 - Computer Array](#)
 - w/ a [Geshrinari Psionic Signal Controller](#)
- [GE-T1-H3300 - Spacecraft \(DO\) Hull Construction](#)
- [Ge-T1-P3300 - Graviton Drive Engine](#)
- [Ge-T1-P3301 - Continuum Distortion Drive](#)
- [Ge-T1-P3302 - Turbo Plasma Drive](#)
- [Ge-T1-S3300 - CFS Shielding](#)



Equipment

- 4 [EM-G9-2A Work Flashlight Kit](#)
- 1 [EM-G16-1B Medical Kit](#)
- 1 [EM-G17-1a Basic Tool Kit](#)
- 4 [EM-G19 - Survival Kit](#)

OOC Notes

Authored by [Nashoba](#) Sep 13, 2011 Submission Approved by [Wes](#) on Sep 18, 2011. [Forum Thread](#).

Products & Items Database	
Product Categories	small craft
Product Name	Hikiuma-Class Shuttle
Nomenclature	Ge-T1-2A
Manufacturer	Geshrinari Shipyards
Year Released	YE 33
Price (KS)	24,000.00 KS

From:

<https://wiki.stararmy.com/> - **STAR ARMY**

Permanent link:

https://wiki.stararmy.com/doku.php?id=corp:geshrinari_shipyards:ge_t1_2a_shuttle&rev=1703149047

Last update: **2023/12/21 00:57**

