

# Ge-T1-2a - Hikiuma-Class Shuttle



The Ge-T1-2a is an upgrade to the venerable [Ge-T1-1A - Transatmospheric Shuttle](#). It became available in [YE 33](#). The version of this ship re-designed for disaster recovery operations is the RDRS Ge-T1-2a - Hikiuma-Class Shuttle.



## About the Hikiuma

Hikiuma is available as either a new craft or a refit to an existing [Ge-T1-1A - Transatmospheric Shuttle](#). They kept the overall appearance of the shuttle but replaced the original nacelles with more streamlined ones and upgraded the propulsion and other systems. Hikiuma means draft horse in [Yamataian](#).

## History

After years of selling the reliable [Ge-T1-1A - Transatmospheric Shuttle](#) Geshrinari Shipyards decided it

was time to update the design. The effort consisted mostly of upgrading the various systems, to improve the performance of the shuttle.

## Appearance

The Hikiuma comes with a white hull, the new nacelles are mounted onto the original winglets on either side. There are the dorsal and ventral docking hatches, and a hatch on the port side. When the CDD are active they glow with a rainbow like effect. When they are inactive they appear dark red.

# Statistics and Performance

## General

- Class: Ge-T1-2A
- Type: Shuttle
- Manufacturer: [Geshrinari Shipyards](#)
- Production: Mass Production
- Designer: [Tamahagane Corporation R&D](#)
- **Price:** 24,000 [KS](#) new / 5,000 [KS](#) to upgrade from Ge-T1-1a

## Passengers

Crew: 2 operators are recommended, but only one is required. Maximum Capacity: There are accommodations for 52 people (2 pilots, 48 passengers, and 2 additional crew)

## Dimensions

- Length: About 11.5 meters (37.73 feet)
- Width: About 8 meters (26.25 feet)
- Height: Just over 2 meters (6.56 feet)
- Decks: 1

## Propulsion and Range

**Continuum Distortion Drive:** 5,000c (~0.57 ly/h) **Sublight Engines:** .375c (~112,422 kilometers per second) (~69,856 miles per second) **Atmospheric:** 1,225 kph (761.3 mph) Mach 1 Range: 10 days of travel (about 137 light-years at maximum speed). Lifespan: 20+ Years Refit Cycle: Once every 5 years

## Damage Capacity

See [Damage Rating \(Version 3\)](#) for an explanation of the damage system.

- Hull: 16 Armor Scale
- Shields: 20 (Threshold 4)



## Details

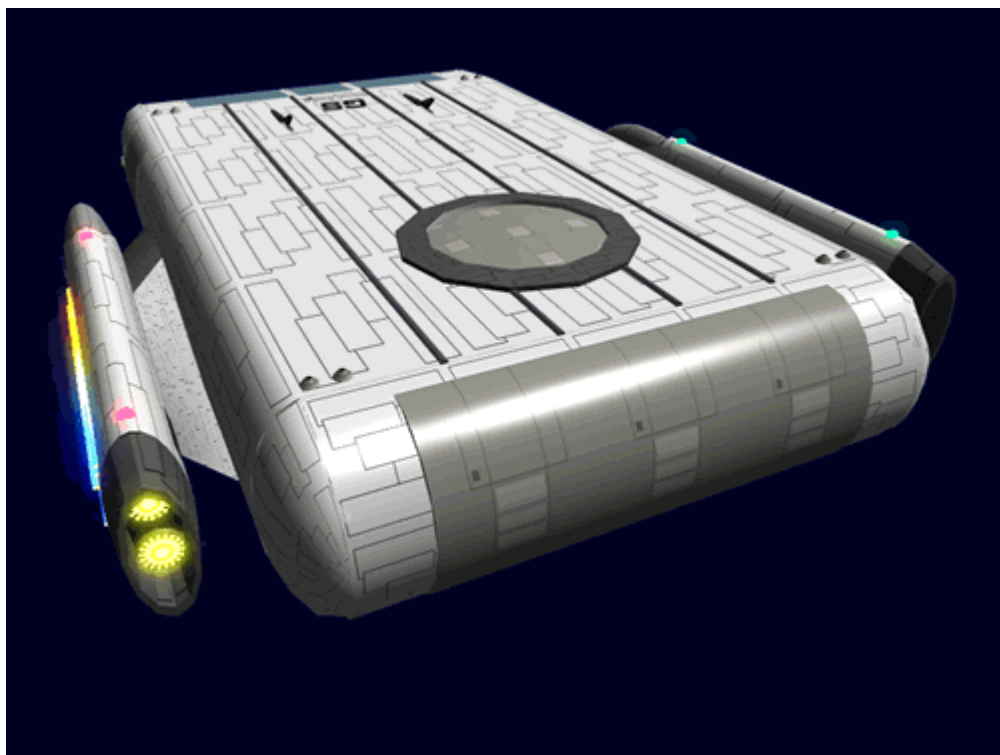
- Primary Purpose: Interstellar Transport
- Secondary Purpose: Planetary Landings
- Weapons: None

## Systems



The Hikiuma is equipped with the following systems:

- [Ge-T8-E3104 - Communications Array](#)
- [Ge-T8-V3100 - Environmental System](#)
- [Ge-T8-E3100 - Basic Small Craft Sensor Package](#)
- [Ge-T8-E3103 - Computer Array](#)
  - w/ a [Geshrinari Psionic Signal Controller](#)
- [GE-T1-H3300 - Spacecraft \(DO\) Hull Construction](#)
- [Ge-T1-P3300 - Graviton Drive Engine](#)
- [Ge-T1-P3301 - Continuum Distortion Drive](#)
- [Ge-T1-P3302 - Turbo Plasma Drive](#)
- [Ge-T1-S3300 - CFS Shielding](#)

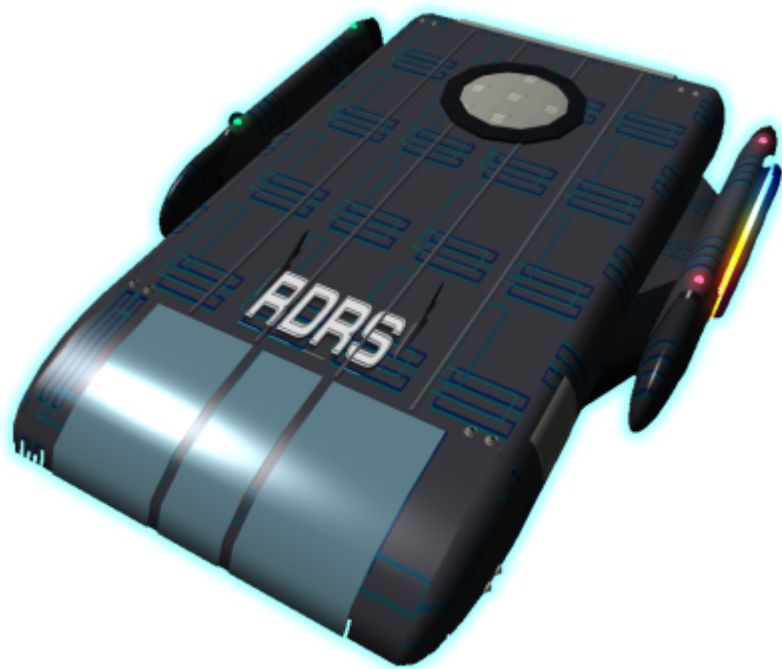


## Equipment

- 4 [EM-G9-2A Work Flashlight Kit](#)
- 1 [EM-G16-1B Medical Kit](#)
- 1 [EM-G17-1a Basic Tool Kit](#)
- 4 [EM-G19 - Survival Kit](#)

## Disaster Recovery Version

The redesigned Disaster Recovery version of this ship is the RDRS Ge-T1-2a - Hikiuma-Class Shuttle, pictured below:



This transatmospheric [Rapid Disaster Response Service](#) shuttle was meant to quickly ferry small groups into and out of atmospheres during disaster recovery operations. This shuttle might move specialized disaster recovery technicians, needed medical personnel, or leadership teams from different space to atmospheres and *vice versa*.

## OOC Notes

Authored by [Nashoba](#) Sep 13, 2011 Submission Approved by [Wes](#) on Sep 18, 2011. [Forum Thread](#).

Products & Items Database	
Product Categories	small craft
Product Name	Hikiuma-Class Shuttle
Nomenclature	Ge-T1-2A
Manufacturer	<a href="#">Geshrinari Shipyards</a>
Year Released	<a href="#">YE 33</a>
Price (KS)	24 ,000.00 KS

From:

<https://wiki.stararmy.com/> - **STAR ARMY**

Permanent link:

[https://wiki.stararmy.com/doku.php?id=corp:geshrinari\\_shipyards:ge\\_t1\\_2a\\_shuttle](https://wiki.stararmy.com/doku.php?id=corp:geshrinari_shipyards:ge_t1_2a_shuttle)

Last update: **2024/02/21 19:09**

