

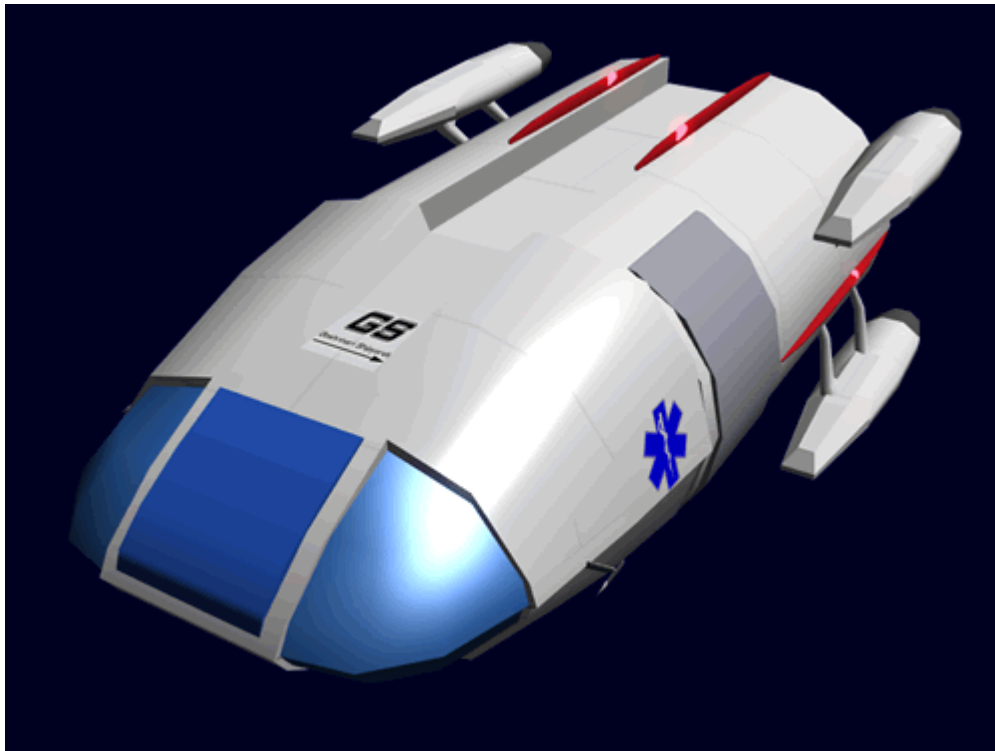
# Ge-T2-1E "Kuma" Medevac Shuttle

The Ge-T2 is a civilian version of the [Kuma T8 Medevac Shuttle](#), which became available in [YE 31](#).

# GS

Geshrinari Shipyards

*A Tamahagane Company*



## Statistics and Performance

The Kuma Medevac Shuttle has the following statistics:

### General

- Class: GE-T2-1E
- Type: Shuttle
- Designers: [Ketsurui Fleet Yards](#)
- Manufacturer: [Geshrinari Shipyards](#)
- Production: Mass Production

- Price: 18,000 [KS](#) new

## Dimensions

- Length: 6 meters (19.68 feet)
- Height: 2 meters (6.56 feet)
- Width: 3 meters (9.84 feet) (*Fuselage*)
- Width: 3.5 meters (11.48 feet) (*Overall*)

## Speeds

The *Kuma* is an nimble craft.

- **Atmospheric:** Cruise: 2,143 kmph (1,332 mph) Maximum: 6,125 kmph (3,806 mph)
- **Sublight Engines:** .375c (~112,422 kilometers per second) (~69,856 miles per second)

## Passengers

Crew: 2 operators are recommended, but only one is required.

**Passengers:** 6

Maximum Capacity: There are accommodations for 8 people (2 crew, 6 passengers)

## Damage Capacity

See [Damage Rating \(Version 3\)](#) for an explanation of the damage system.

- Hull: Tier 7 (Light Mecha)
- Shields: Tier 7 (Barrier)

## Inside the Shuttle

The Interior is identical to the [Ge-T2-1C - "Kuma" Shuttle](#), except for the addition of four mounting points for up to four [Ke-T8-M3202 Docking Stations](#).

- 1 - 4 [Ke-T8-M3201 Grav Gurneys](#)

Typically only 1 or 2 [Ke-T8-M3201 Grav Gurney](#) are installed, unless the shuttle is being used to transport multiple patients from one medical facility to another. In cases where the patients are ambulatory, the shuttle will use the passenger seats for such transfers.

## Overhead lockers

There are six overhead lockers in the passenger area where additional equipment is stored. By mounting them high leaves all of the passenger floor space free.

These items are typically stored here:

- [Type 31C Medical Kit](#)
- [Portable Medical Scanner PMS-1C](#)
- [Medical Scanner Charging Station](#)
- [Star Army Trauma Kit, Type 32](#)
- [EM-G17-1a Basic Tool Kit](#)

## Systems

The Ge-T2 has the following differences from the Ke-T8:

- [Ge-T8-E3100 - Basic Small Craft Sensor Package](#)
- [Ge-T8-E3104 - Communications Array](#)
  - [w/ Geshrinari Psionic Signal Controller](#)
- [Ge-T8-E3103 - Computer Array](#)
- [Durandium Alloy](#) hull with [Durandium Alloy](#) frame
- [Ge-T8-V3100 - Environmental System](#)

## OOO Notes

Authored by [Nashoba](#) and approved by [Wes](#) on Aug 29, 2009 <sup>1)</sup>

Artwork created by [Nashoba](#) from DOGA.

[Yuuki](#) updated this article for [Damage Rating \(Version 3\)](#) on 2020/03/07 04:51.

Products & Items Database	
<b>Product Categories</b>	small craft
<b>Product Name</b>	Kuma Medevac Shuttle
<b>Nomenclature</b>	Ge-T2-1E
<b>Manufacturer</b>	<a href="#">Geshrinari Shipyards</a>
<b>Year Released</b>	<a href="#">YE 31</a>
<b>Price (KS)</b>	18,000.00 KS

<sup>1)</sup>

<https://starmy.com/roleplay-forum/index.php?threads/yamatai-kuma-t8-multi-role-shuttle.4454/>

Last update: 2023/12/21 00:57 corp:geshrinari\_shipyards:ge-t2-1e\_medevac\_shuttle [https://wiki.stararmy.com/doku.php?id=corp:geshrinari\\_shipyards:ge-t2-1e\\_medevac\\_shuttle](https://wiki.stararmy.com/doku.php?id=corp:geshrinari_shipyards:ge-t2-1e_medevac_shuttle)

---

From:  
<https://wiki.stararmy.com/> - **STAR ARMY**

Permanent link:  
[https://wiki.stararmy.com/doku.php?id=corp:geshrinari\\_shipyards:ge-t2-1e\\_medevac\\_shuttle](https://wiki.stararmy.com/doku.php?id=corp:geshrinari_shipyards:ge-t2-1e_medevac_shuttle)

Last update: **2023/12/21 00:57**

