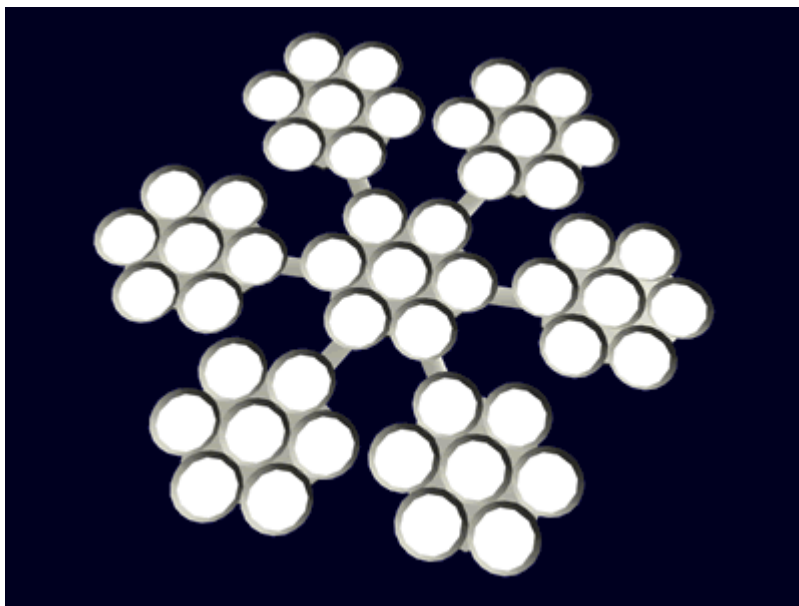


Ge-H3-M3300 - Lighting Array



The Ge-H3-M3300 - Lighting Array built by [Geshrinari Shipyards](#) was created for the [Ge-H3-1a - Sanza-Class Shipyard](#) it became available starting in [YE 33](#). It is used to provide illumination in space.



The Ge-H3-M3300 consists of cluster of seven moving panels, each with seven large lamps.

The Array is thirty meters across.

Armatures

The outer six light assemblies are attached to the central unit, by armatures. These hold the panels in position and are capable of angling them as necessary.

Guidance

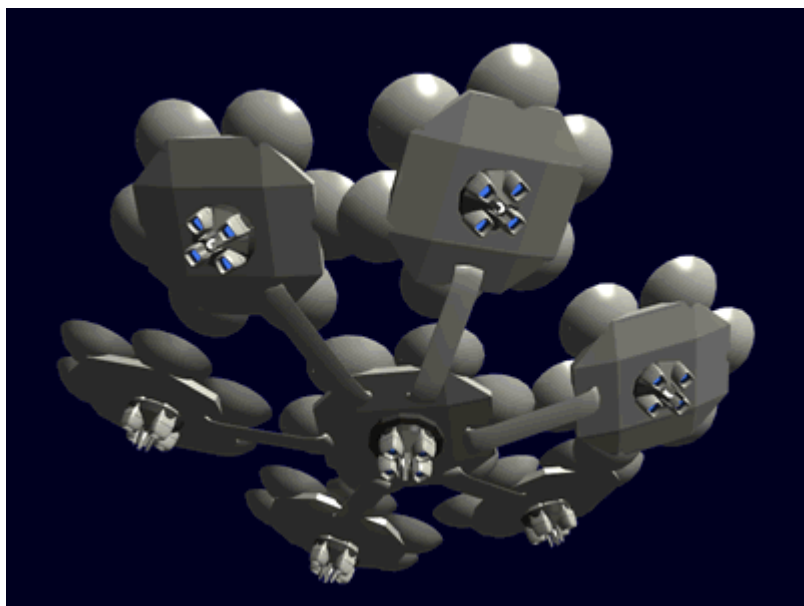
The Lighting Array uses a [Ge-Z1-E3300 - Guidance System](#) for controlling movement, and operation of the array.

Fusion Power

The array is powered by a compact fusion generator which has enough fuel to operate continuously for 300 hours.

Thrusters

The array is equipped with several clusters of [Geshrinari Maneuvering Thrusters](#). These are used to move the array, rotate it and hold it in position.



From:
<https://wiki.stararmy.com/> - **STAR ARMY**

Permanent link:
https://wiki.stararmy.com/doku.php?id=corp:geshrinari_shipyards:component:ge_he_m3300&rev=1688831201

Last update: **2023/12/21 01:14**

