

# Ge-H2-M3300 Spaceport Transit System



The Ge-H2-M3300 - Spaceport Transit system developed for the [Ge-H2-1a - Amatsu-Class Spaceport](#), it became available in [YE 33](#).

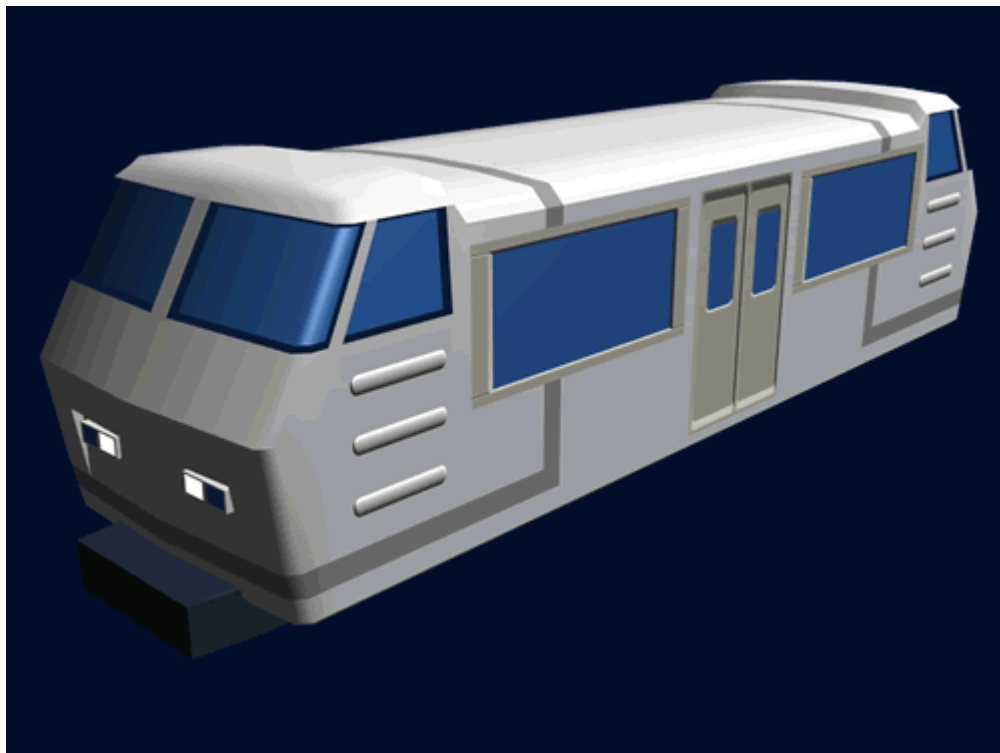
## Details

Class: Transit System Nomenclature: Ge-H2-M3300 Type: Transport Designers: [Geshrinari Shipyards](#)  
Manufacturer: [Geshrinari Shipyards](#)

The Transit system uses a maglev monorail tram. The trams travel through a network of tunnels in the facility. Tram stations are placed at convenient locations and feature a platform, and seating for passengers waiting. The system has additional trams that can be put into service during high traffic periods.

## Tram

The Tram is the heart of the Transit system. These trams are environmental controlled, and have displays on the upper interior walls above the side seats. The displays provide important information, as well as advertisement. Each tram has two control rooms, under which the drive systems are situated. The Trams are powered by a compact [Geshrinari Aether Generator](#). There are double sliding-doors on either side of the tram to let the passengers enter or exit.



## Dimentions

Length: 14.5m (47.56 ft) Height: 3.75m (12.3 ft) Width: 4 m (13.12ft) **Speed:** 89 km/h (55 mph)

### Passengers:

- **Seated:** 24 in side seats
- **Standing:** 48
- **Total:** 72

From:  
<https://wiki.stararmy.com/> - **STAR ARMY**

Permanent link:  
[https://wiki.stararmy.com/doku.php?id=corp:geshrinari\\_shipyards:component:ge\\_h2\\_m3300](https://wiki.stararmy.com/doku.php?id=corp:geshrinari_shipyards:component:ge_h2_m3300)

Last update: **2024/02/25 13:23**

