

Ge-E1-W3400 - Dual Plasma Array



The Ge-E1-W3400 - Dual Plasma Array was developed for the [Ge-E1-1a - Tenba-Class Transporter](#), it became available in [YE 34](#).

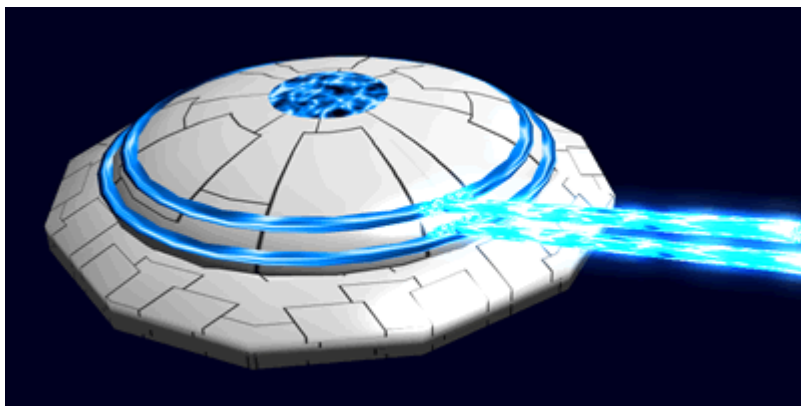
The Ge-E1-W3400 contains a plasma chamber which is supplied from the ships fuel reserves. The chamber feeds into a pair of coil that accelerate the plasma to a high velocity. It also uses a pair of collimator rings to focus the plasma and allow the turret to fire anywhere along the 360° ring. It is powered by the crafts primary power.

The rings can be fired at two separate targets or for a more powerful hit they can be targeted at the same target point.

The Ge-E1-W3400 can be installed in a fixed or retractable form, it is 1 meter in diameter.

Details

Class: Anti-missile/armor Nomenclature: Ge-E1-W3400 Type: Weapon Designers: [Tamahagane Corporation R&D](#) Manufacturer: [Geshrinari Shipyards](#) **Price:** 3,000 **KS**



Specifications

Max Range (space): 1 light second, 300,000 kilometers {186,282 miles} Max Range (atmosphere): 300 kilometers {180 miles}

Rate of fire: Once every 10 seconds

Damage

Damage Rating (Version 3):

- Single: 3 ADR
- Paired: 1 SDR / 5 ADR

Damage Rating (Version 3)

- Single: Medium to heavy anti-armor (5~6)
- Paired: Heavy anti-mecha (9)

From:
<https://wiki.stararmy.com/> - **STAR ARMY**

Permanent link:
https://wiki.stararmy.com/doku.php?id=corp:geshrinari_shipyards:component:ge_e1_w3400

Last update: **2023/12/21 04:21**

