

Ge-H2-E3300 - Senkun Dual Quantum Computer System

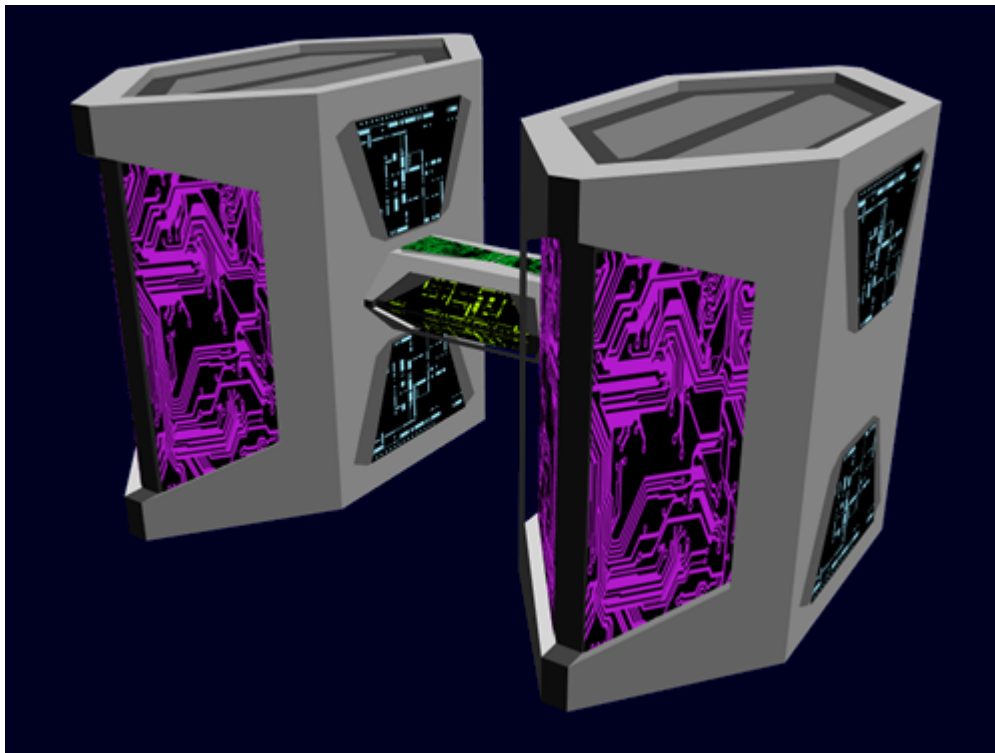


The Ge-H2-E3300 - Senkun was developed by [Geshrinari Shipyards](#) for use on the [Ge-H2-1a - Amatsu-Class Spaceport](#) and became available in [YE 33](#).

The Senkun is a paired artificial intelligence systems based on the computer system in the [Ge-Y2-E3300 - Hogosha Quantum Computer System](#). It runs the [Kessaku Systems](#) operating system and is limited to civilian access to [PANTHEON](#) by default. The AIs can interact with the crew via any terminal, or in locations equipped with a holographic projector. Senkun is *Yamataian* for “Ancestors”.

The two cores are connected by an inter-phase unit that allows the two to share information seamlessly.

Note: Active Duty Military Personnel may use their authorization to access higher levels of the network.



The two cores have specific assignments

Sosen

The Sosen core is responsible for the actual spaceport operation. It is the higher function of the Senkun.

Douso

The Douso core is responsible for handling all ancillary electronic transactions, and hosts the [Ge-H3-E3300 - STATCOM Network \(Civilian\)](#). It is essentially an autonomic system.

Interacting With Senkun (OOC)

As with most other AI systems, the Senkun is a very powerful system, and is capable of replying to most requests almost instantaneously. The only exception would be in cases where the Senkun has to contact another crew member, or contact an external network or system.

The Senkun are capable of operating any electronically controlled system on the ship. The Senkun is programmed with a friendly and polite personality, as an AI its personality will expand with its experience. The Senkun primary directive is to ensure the safe and efficient operation of the vessel or facility it is installed in. It will not take an action that will jeopardize a member of the crew's life, even if ordered to do so. However, it will not interfere with the orders of the ship's owner or commander.

From:
<https://wiki.stararmy.com/> - **STAR ARMY**

Permanent link:
https://wiki.stararmy.com/doku.php?id=corp:geshrinari_shipyards:component:ge-h2-e3300

Last update: **2024/02/25 13:21**

