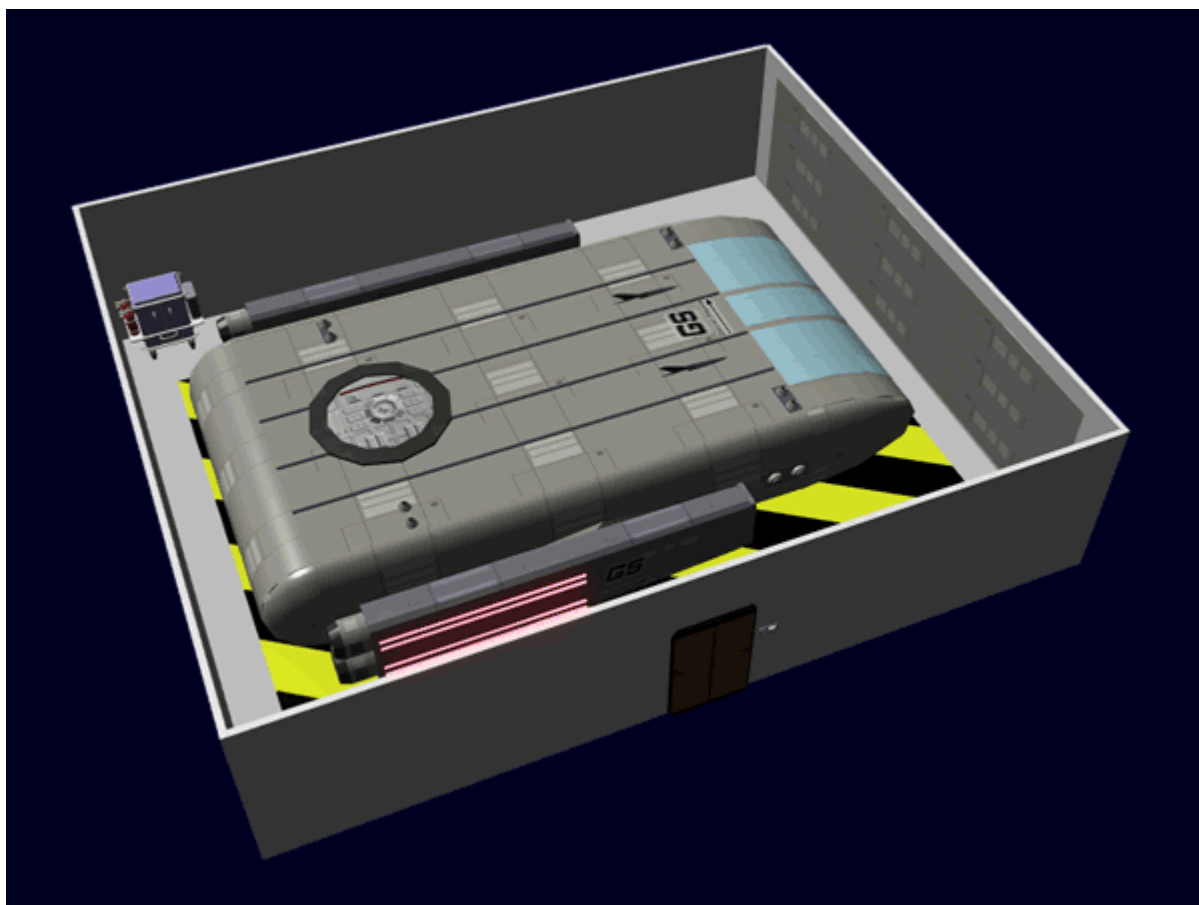


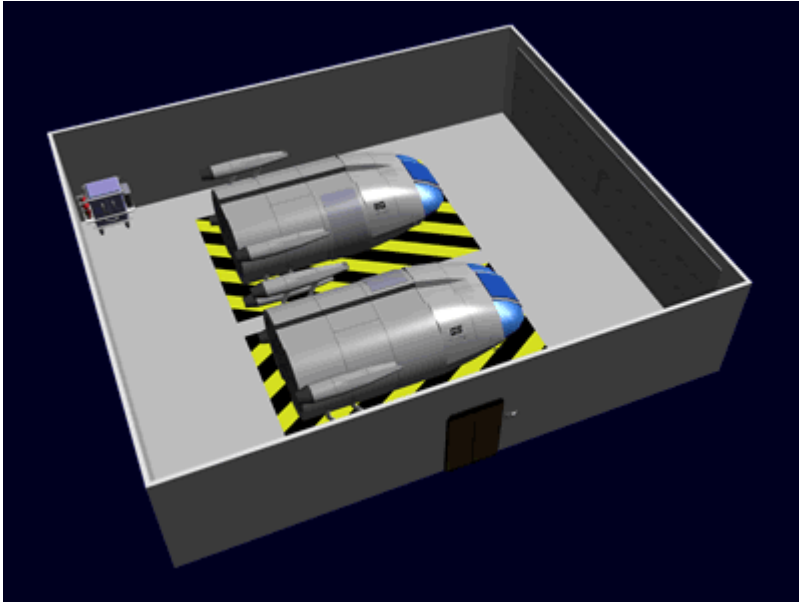
Geshrinari Standard Shuttle Bay

[Geshrinari Shipyards](#) shuttle bay depending on the craft to be housed is one or two decks tall. They have a floor that is glossy, polished white with one or more landing targets for the shuttles. On some ships the landing area is capable of rotating to allow the shuttle to fly out forward. The walls are typical starship interior paneling. They have an exterior door that seals the bay when no launches or recoveries are planned. When the exterior door is open, an atmospheric containment force field is engaged for safety purposes.

Gravity in this area is maintained at 1G. Along the side of the bay lockers and tool kits are present for servicing the shuttle.



A [standard ship's door](#) with a [Ge-Y1-E3103 - Intercom System](#) opens into the bay. There is ceiling mounted lighting, as well as [Ge-Y1-E3104 - Automatic Fire Suppression System](#) dispersal nozzles through out the bay. The lighting has two modes, red and white. The red lighting is used when launching shuttles into dark environs.



From:
<https://wiki.stararmy.com/> - **STAR ARMY**

Permanent link:
https://wiki.stararmy.com/doku.php?id=corp:geshrinari_shipyards:compartments:shuttle_bay

Last update: **2023/12/21 04:20**

