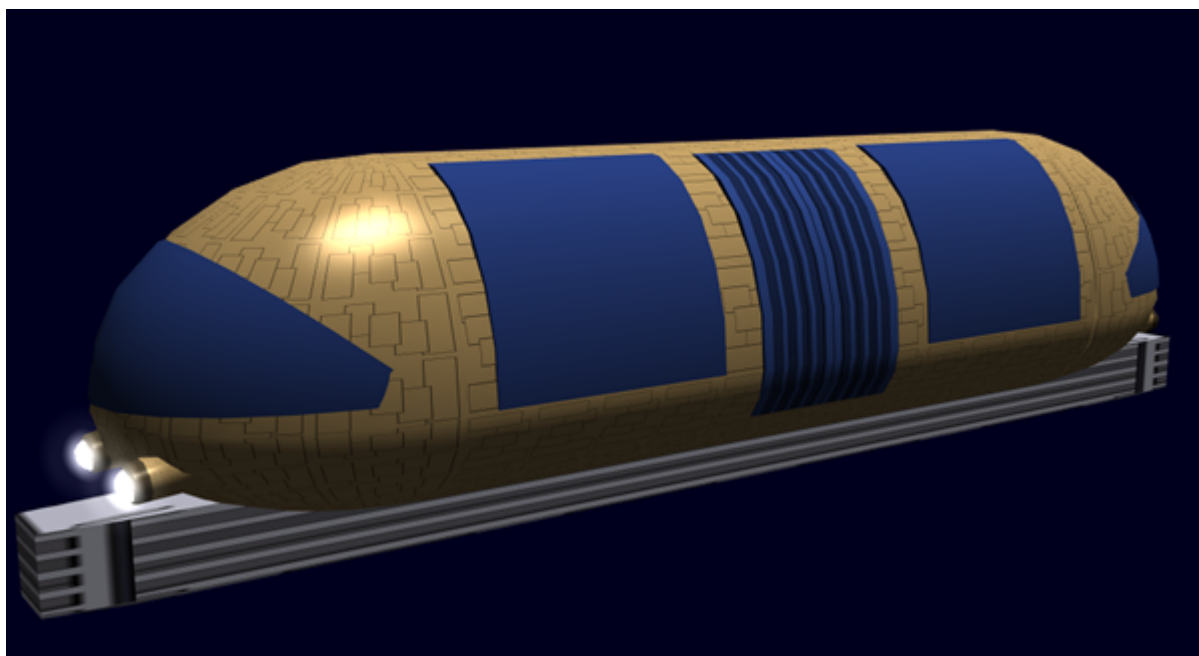


# EM-K7 - Monorail

*Emrys Industries*

*A Tamahagane Company*

The EM-K7 Monorail is an [Emrys Industries](#) mass transit system for use in urban environments, and became available in [YE 34](#).



## About the EM-K7-1a

The Monorail was one of [Emrys Industries](#) contributions to [Teisenjou](#). The system is remotely guided, and each carriage is autonomous. The system is intended for operating in urban areas, or connecting municipalities that are close. It is not designed to serve as a long distance rail system. It is a Maglev system, and capable of high speeds. The carriages have their own power supply, guidance system and environmental controls.

## History

The Monorail was originally developed for use in [Teisenjou](#) to provide quick, environmentally safe transportation for the populations. The needs of [Teisenjou](#) required an efficient system capable of taking people to any part of the complex.

## Details

Manufacturer: [Emrys Industries](#) Nomenclature: Em-K7-1a Type: Monorail Class: Transportation Designer: [Tamahagane Corporation R&D](#)

## Passenger Capacity

- **Normal:** 96 Seated and Standing
- **Full:** 130 Seated and Standing

## Damage Capacity

See [Damage Rating \(Version 3\)](#) for an explanation of the damage system.

- Hull: Tier 4 (Light Armor)

## Features

- EM-K7-P3400 Maglev System
  - Maglev max speed capable 300 mph, normal operating range 60-70 mph
- Powered by fusion 2 [EM-K4-G3300 Fusion Generator](#) 360 hours operation
- Environmentally controlled 4 [EM-K4-V3300 Environmental System](#)
- Single and tandem operation
- Capable of autonomous operation [EM-K4-E3301 Autopilot Collision Avoidance System](#), [EM-K4-E3303 Sensors](#), but can be manually operated by transit personnel.
- Internal Security
- Rugged, safe construction [EM-K4-A3300 Durable Vehicle Construction](#)

## Tracks

The system can be setup to operate level with the ground, on elevated tracks, or below ground as a subway. The tracks can be curved allowing the system to wind its way through urban areas. The track is composed of modular sections which have embedded sensors which relay data to the control center. The sensors provide safety information on the track status, as well as the location and velocity of any active carriage. When carriages are passing through a curved track the carriage raises to accommodate the curved track.

## Stations

The EM-K7 Monorail is typically accessed through [EM-K7 - Monorail Station](#).

Products & Items Database	
Product Categories	vehicles
Product Name	Monorail
Nomenclature	EM-K7
Manufacturer	<a href="#">Emrys Industries</a>

From:

<https://wiki.stararmy.com/> - **STAR ARMY**

Permanent link:

<https://wiki.stararmy.com/doku.php?id=corp:emrys:monorail>

Last update: **2023/12/21 00:57**

