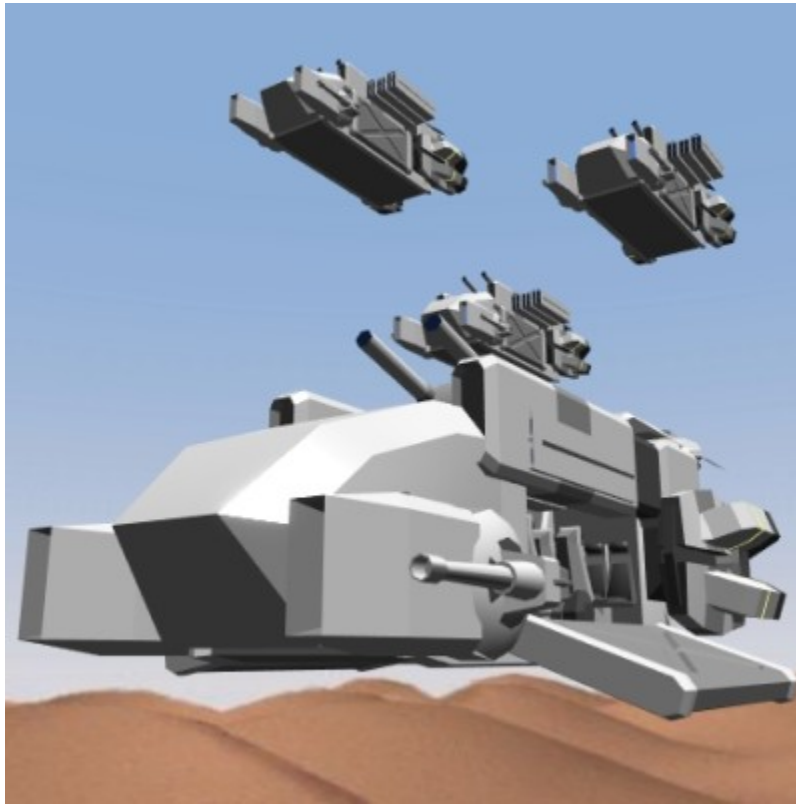


# BW-RTTS "Bolt"

A Rapid Tactical Transport Shuttle built for the NDC by the [Department Of Engineering](#), as means of rapidly deploying troops to the AO<sup>1)</sup>. It's designed to carry a payload, and to have a decent sized occupancy for means of a mainline support craft.



## About the Ship

In [YE 41](#), [NDC Ground Forces "Duskerian Legion"](#) realized they had a large flaw in their military structure, which was a severe lack of air support craft. Dropships were also in short availability, so the lab techs and engineers got together, and decided to get two birds with one stone. Thus, the S6-RTTS "Bolt" was drawn up, drafted, and put through trials after the first prototype was built. It flies like a high speed brick, handles like one too, but can into whatever tight space needed and bring a decent arsenal of onboard weapons to boot.

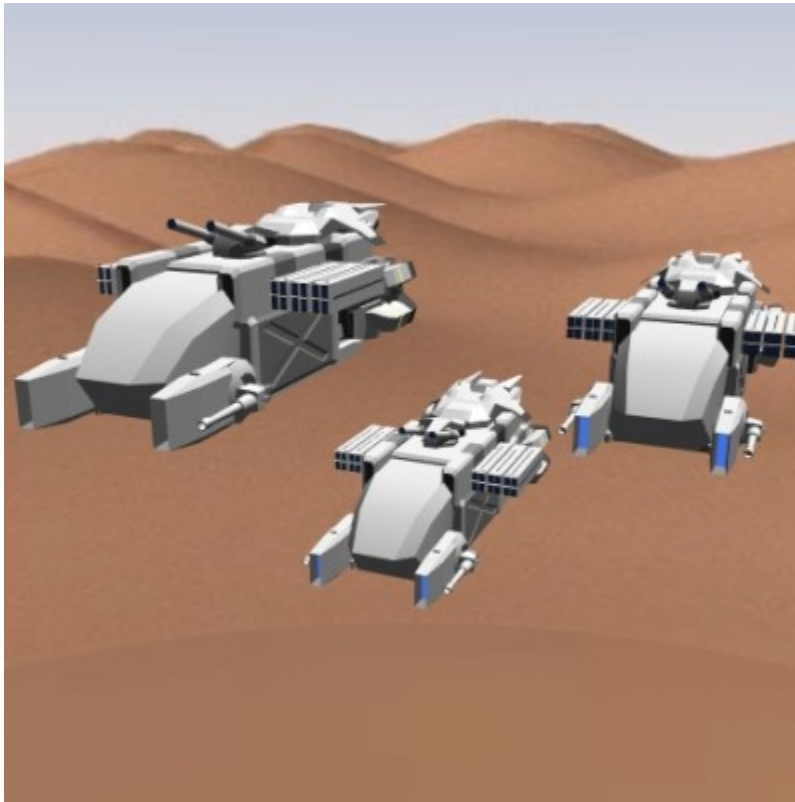
## Key Features

The Bolt offers a arsenal comparable to a light gunship, and features thrust similar to VTOL<sup>2)</sup> craft. Also given it's size, it's relatively fast for its role, and able to drop three strike teams of six men each and provide local fire support from the air.

## Mission Specialization

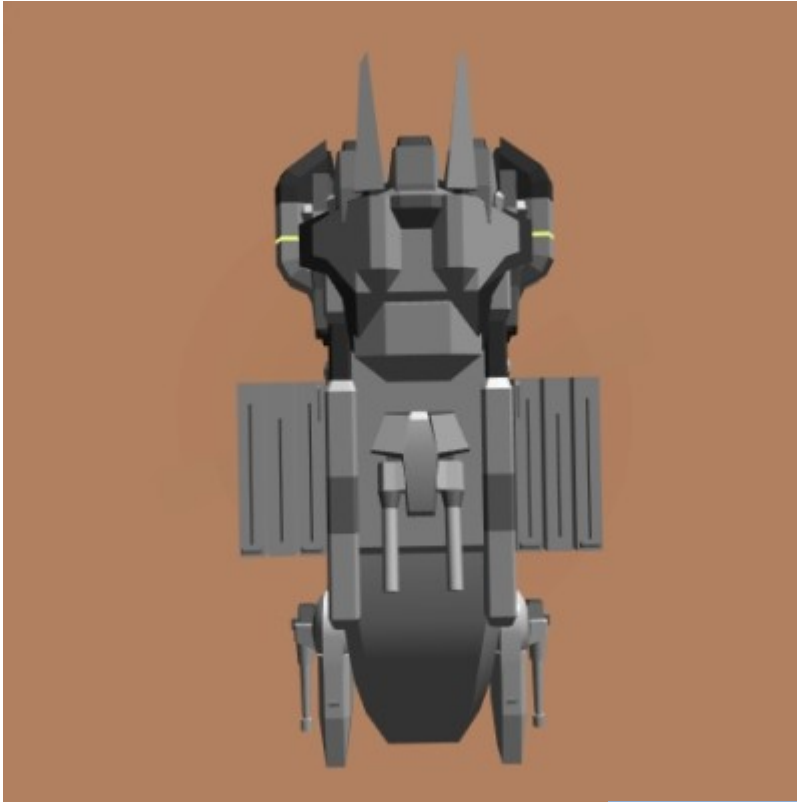
What this ship is proficient at.

- Troop Transportation
- Local Air Support



## Appearance

The Bolt could be described as a flying aerodynamic brick, being very chunky, but curved in all the right places. Rotating thrusters that are attached like “limbs”, allow tighter control of the craft, if albeit allowing less finesse. Weapons are mounted upon it's frame, a pair of missile racks either deployed out above the troop bay ramp, or pulled in for storage.



## History and Background

Developed in [YE 41](#), by [Department Of Fleet Development \(D.O.F.D.\)](#) drafted the designs and proposed them to the leaders of [NDC Ground Forces "Duskerian Legion"](#). With confirmation it met the requirements

of what they needed, the craft went into prototyping, and after several successful test flights, and a trial sortie, was approved for service. It is now in full production, and entering mass service as an air support unit, and troop transport.

## Statistics and Performance

The Bolt's data in regards to manufacturing and deployment.

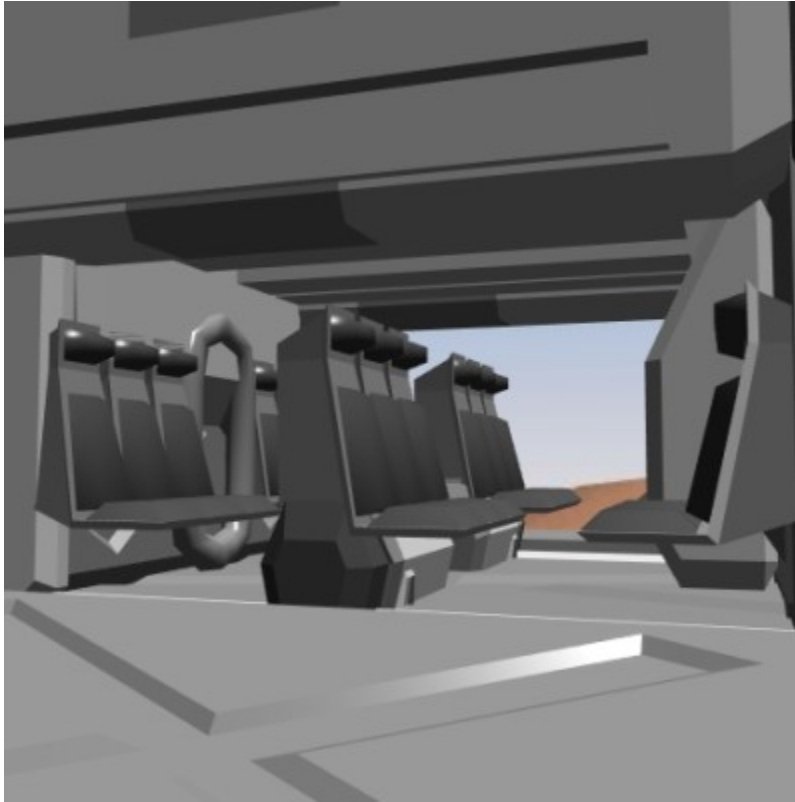
### General

- Class: BW-RTTS-1A
- Type: shuttle/dropship
- Designers: [Department Of Fleet Development \(D.O.F.D.\)](#)
- Manufacturer: [Department Of Engineering, Black Wing Enterprises](#)
- Fielded by: [New Dusk Conclave](#)

### Passengers

Crew: 2 operators are recommended, 1 is required.

Maximum Capacity: There are accommodations for 18 people. About 25 people can fit aboard in an emergency, but the ship would be extremely cramped.



## Dimensions

- Length: 10 meters
- Width: 4 meters
- Height: 3.5 meters

## Propulsion and Range

- [Falcon Tunnel Drive](#): 0.2ly/m with a jump range of 15ly max per jump.
  - Sublight Engines: .30c
- Range: 1 month
- Lifespan: 20 years
- Refit Cycle: yearly.

## Damage Capacity

See [Damage Rating \(Version 3\)](#) for a guide to damage ratings to include.

DRv3 Tier: 8 Medium mecha

# Inside the Ship

## Compartment Layouts

Contextual descriptions of each compartment within the craft.

### Cockpit

Cramped, dark, and designed for efficiency. The cockpit is two helm stations in their own control alcoves, holo displays and controls surrounding the pilot seat in a semi-circle. The false windshield is just a screen that relays the feed from the hull's embedded optical sensors in real time to give the illusion of being a window. In the rear of the compartment to the left is a pair of mounted cots for the pilots in a recessed section of the space. To the right is an enclosed single toilet and shower combo.

### Toilet/Shower

Inside this small enclosed space is a sink, a toilet, a small shower, and a cabinet for a medkit and towels as well as toiletry supplies. It is tight space with enough room for one person to stand unhindered.

### Troop Compartment

The troop bay is tall and a bit more open to compensate for heavy weapon carrying occupants. 18 seats fill the space in rows of three, the first and last facing inwards, and the second rows facing the first. A arms and equipment locker sits in the center of the back bulkhead, a isle leading from it to the hatch that connects the cockpit to the troop bay. Rails and mountings are present near either ramp for a mounted weapon.

## Ship Systems

The data on the Bolt's internal and exterior systems.

### Armored Hull and Hull Integrated Systems

A tier 8 hull consisting of [Durandium Alloy](#), with layers of graphene sandwiched [Osmanium](#) spread throughout. This is within a shell of [Aegium](#), which also makes up the support structure deeper within.

## Computers and Electronics

The Bolt features a graphene based computer system as well as [E.V.E. AI](#) to manage onboard systems, assist in piloting, and to sort/catalog data collected from the Bolt's sensor array. Managing onboard resources and the functions of the various onboard systems are also included in its job set. The EVE in addition, handles all onboard calculations, and processing of data, as well as battle net packages.

- Optional Systems: [Electronic Camouflage System](#)

## Emergency Systems

A bank of 40 [BW-PC-1B "PowerPak"](#), acts as emergency power source in the event that the main drive's power cores die. This will ensure that comms, life support, and sensors continue to receive power for three weeks. Alternatively, power can be routed to the engines for one week to all systems for at a maximum of up to one week.

## Life Support Systems

Life support consists of oxygen recyclers spread through out the ventilation of the cockpit and troop bay, as well as [BW-HU-1As](#) to provide heating inside the interior of the craft. In addition, water recycling and waste disposal systems are present to provide the occupants with a one month supply of drinking water for up to one month, this also includes running water for the toilet/shower compartment.

## Propulsion

[Helix Plasma Engines](#) of various sizes arranged around the hull of the craft, as well as the thruster "limbs", and five across the top of the Bolt's aft section. The drive system for these are powered by 8 [BW-PC-1A Plasma Core](#), providing them 1 month of power, and therefore 1 month of flight time.

## Shield Systems

- [Paladin Barrier System](#)

## Weapons Systems

Data on all the Bolt's weapon systems and various options for each attach point.

- Missile Racks: 6<sup>3)</sup> [FiveR Missile Pod](#), DR 9
- Side Mounted Weapons: <sup>4)</sup>
  - 4<sup>5)</sup> [Hyper-Shift Rotary Chaingun](#), DR 6
  - 2<sup>6)</sup> [Orbit Jumper Missile System](#), DR 7

- 4<sup>7)</sup> [Shooting Star Machine Gun](#), DR 6
- Point Defense: 4 mounted in a turret housing with ammo feed and remote control system<sup>8)</sup> [BWE Rotary Chain Gun](#), DR 3

## OOC Notes

[Jack Pine](#) created this article on 2018/10/14 21:47.

- [Approval Thread](#)

Products & Items Database	
<b>Product Categories</b>	small craft
<b>Product Name</b>	BW-RTTS "Bolt"
<b>Nomenclature</b>	BW-RTTS-1A
<b>Manufacturer</b>	<a href="#">Black Wing Enterprises</a>
<b>DR v3 max</b>	Tier 8

1)

Area of Operation

2)

Vertical Take Off and Landing

3)

3 on either side/rack

4)

Options for this slot.

5) 7)

2 twin linked on either side.

6)

1 on either side.

8)

controlled by co-pilot

From:

<https://wiki.stararmy.com/> - **STAR ARMY**

Permanent link:

[https://wiki.stararmy.com/doku.php?id=corp:bwe:craft:bw-rtts\\_bolt](https://wiki.stararmy.com/doku.php?id=corp:bwe:craft:bw-rtts_bolt)

Last update: **2023/12/21 04:20**

