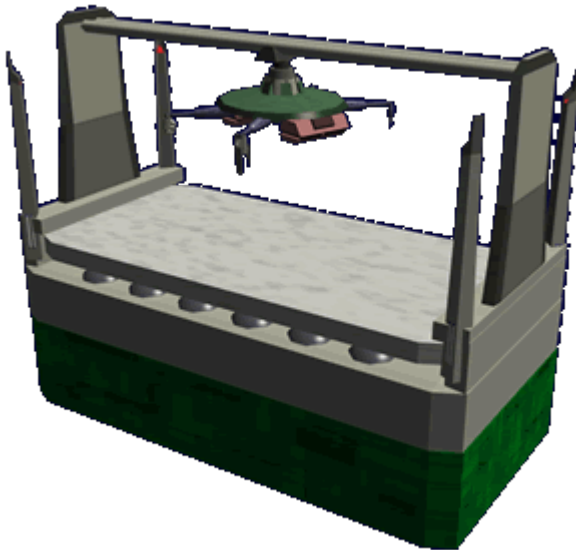


Ke-J1-E3102 - Autonomous Basic Medicine Unit (ABMU)

The Autonomous Basic Medicine Unit (ABMU) is part of the [Autonomous Medical Treatment Center \(AMTC\)](#) and became available in [YE 31](#).



About the ABMU

The ABMU is quite literally your basic *doc in a box*; capable of providing the following basic medical services:

- Physical exams
- Blood tests
- Diagnose and treat known sicknesses
- Set simple fractures and apply casts
- Clean and treat simple wounds such as 🩹 [Lacerations](#), 🩹 [Contusions](#), and 🩹 [Puncture_wound](#).
- Apply sutures or [Liquid Bandage](#) as required
- Apply [Cellular Spray](#) as required

The ABMU can be installed stand-alone when basic medical capabilities are the only requirement.

History

The ABMU was developed as part of the [AMTC](#) to provide basic medical care that a doctor could provide. It is commonly referred to as Dokuta- (Doctor)

Statistical Data

General

Organization Using This item: [Star Army of Yamatai](#), Yamatai government agencies, and Civilians Type: Medical Center Nomenclature: Ke-J1-E3103 Designers: [Ketsurui Zaibatsu](#) Research and Development teams, [Jalen Sune](#) Manufacturers: [Ketsurui Zaibatsu](#), [Star Army of Yamatai](#) Date entered service: [YE 31](#)

Supported species

Currently the ABMU is capable of providing basic medical care to the following species:

- [Human](#)
- [Yamataian](#)
- [Nekovalkyrja](#)
- [Nepleslian](#)
- [Elysian](#)

Capacity

- 1 Patient

Dimensions

Length: 2.44 meters (8 feet) Width: 1.22 meters (4 feet) Height: 2.44 meters (8 feet)

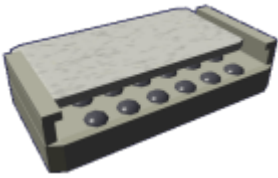
Components

The ABMU has following components:

- [Computer Program Module](#) programmed with the current medical knowledge to diagnose and treat using state of the art diagnostic equipment, and make a treatment determination. Diagnosis functionality is only used when the ABMU is used in stand alone configuration The programming is updatable by trained technicians.



- Detachable Patient Platform (DPP)



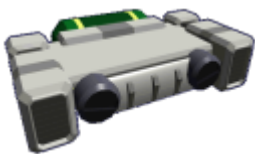
- Scanner nanomachines developed for the Portable Medical Scanner PMS-1M.
- The Medical equipment unit has integrated medical diagnostic and treatment tools. The unit contains various attachments that the ABMU can select depending on what task it is about to perform. Examples are:
 - Hypospray injector
 - Laser Scalpel
 - Thermal imager
 - Compact x-ray
 - Delicate work robotic hand



- Self-contained emergency power



- Containment Force Fields
- Integrated Atmosphere System



- Integrated Decontamination System

From:

<https://wiki.stararmy.com/> - **STAR ARMY**

Permanent link:

<https://wiki.stararmy.com/doku.php?id=stararmy:equipment:amtc:abmu>

Last update: **2023/12/21 04:26**

