

Minori-Class Hospital Ship

The Minori-Class Hospital Ship is an important part of the [Star Army of Yamatai](#) [uchuugun](#) 宇宙軍, it has served as the primary hospital ship since [YE 32](#). It has proven a reliable ship and in [YE 44](#), when it was reviewed, it was placed on a list along with the [Rikei-Class Science Vessel](#) to be updated and kept in service. The new 3B version would be made available at the start of [YE 45](#), and the existing fleet would be planned to be updated throughout that year.

History and Background



The Minori-Class Hospital Ship was designed in [YE 32](#) at [Ketsurui Fleet Yards](#). The hull and spaceframe utilizes the same construction as the [Henry Chen-class Training Ship](#), [Nougaku-Class Agriculture Vessel](#), and the [Nibasha-Class Heavy Freighter](#). The ship's design came in consideration of heavy losses felt during the first year of the [Second Mishhuvurthyar War](#) in [YE 31](#), therefore the ship was put on priority and the first vessels were launched by mid [YE 32](#).

During the regular review cycle in [YE 44](#), the ship was recommended for a major overhaul and updates which would extend its service to the [Star Army of Yamatai](#) into the future. [Star Army Medical Administration](#) was brought into the design team to ensure that the new version of the ship would meet its current standards for patient treatment and care. The overhauls were completed in [YE 45](#), in time for the start of the [Third Mishhuvurthyar War](#).

The ship's class was named in honor of [Taisho Ketsurui-Chinomai Minori](#), who was the director of [Star Army Personnel Command](#) until her retirement in [YE 42](#).

Description

The new 3B version of the Minori-Class Hospital Ship would be updated with the latest systems such as the new [Nodal Liquid Conduit System](#) and the [Universal Hemosynthetic Fabrication System Type 43](#) to make more efficient use of [Hemosynthetic Reconstruction Tube](#) for the treatment of injured [Nekovalkyrja](#). It would also slightly scale back the [Mass Cloning Facilities](#) in favor of more surgical and treatment areas, including additional facilities for the treatment of non-[Nekovalkyrja](#) species serving in the [Star Army of Yamatai](#).



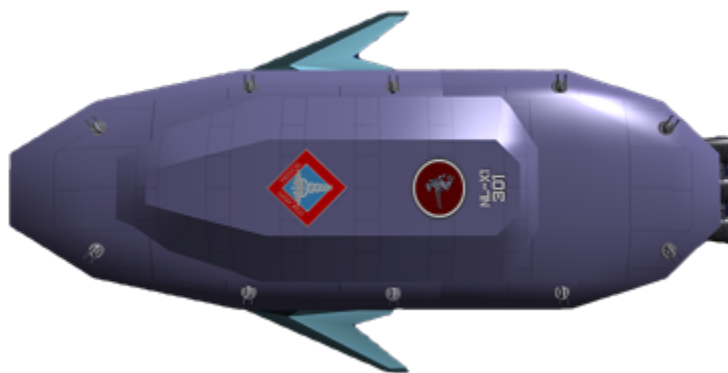
Mission Specialization

The Minori-Class Hospital ship will continue to fulfill its mission profile as follows:

- A mobile medical center is to be place in the logistical attachments of fleets on the front lines.
- A vessel capable of receiving soul survivor pods inbound from battlefields.
 - Which will include updates to [PEARL](#)'s registry of recovered backups.
- A vessel capable of providing planetary settlements within the [Yamatai Star Empire](#) with humanitarian aid and assistance.
 - Expanded service to include [Star Army of Yamatai](#) authorized missions to allied and non-allied settlements with humanitarian aid and assistance.
- A hospital ship to accompany colonization fleets.

Appearance

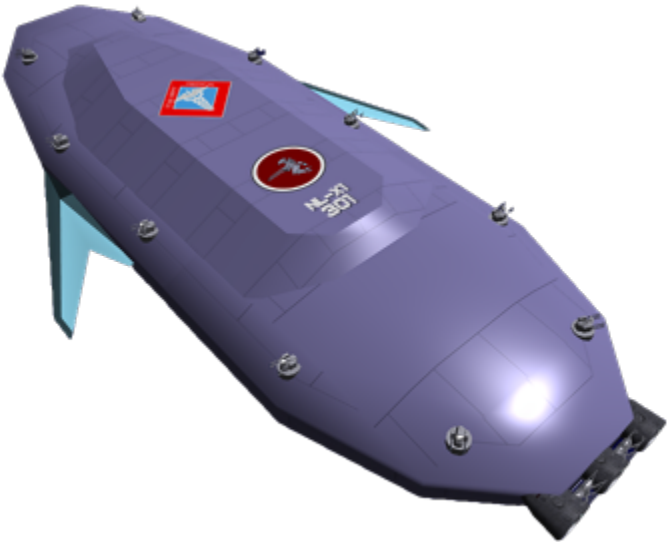
The Minori-Class Hospital Ship has the same squared-off elongated oval profile from the dorsal or ventral view, similar to its sister classes; the [Henry Chen-class Training Ship](#), [Nougaku-Class Agriculture Vessel](#), and the [Nibasha-Class Heavy Freighter](#). It also has the traditional [Star Army of Yamatai](#) livery along with the symbol of [Star Army Medical Administration](#) on its dorsal hull, along with its IRN and the [Star Army Hinomaru](#).



Statistics and Performance

The Statistics and Performance information for the Minori-Class Hospital Ship.

General Statistics

General Statistics for the Minori-Class Hospital Ship	
	
Year Introduced	3A YE 32, 3B YE 44
Class/Nomenclature	Ke-L6-3A, Ke-L6-3B
Designers	Ketsurui Fleet Yards
Manufacturer	Ketsurui Fleet Yards
Fielded By	Star Army of Yamatai
Range	Unlimited Range
Maintenance Cycle	Five year PANTHEON updates, 10 year review by the Star Army of Yamatai with refits as needed.
Damage Rating (Version 3)	Tier 10
Lifespan	This vessel is designed for fifty years of continual use.
Pricing	270,000,000 KS

Personnel and Crew

Information about the Minori-Class Hospital Ship's capacity.

Standard Occupancy 3B	
QTY	Description
375	Star Army of Yamatai personnel ¹⁾
800	Patient Beds
500	Mass Cloning Facility Holding
Emergency	
Up to 2000 individuals.	
Standard Occupancy 3A	
375	Star Army of Yamatai personnel ²⁾
500	Patient Beds
1000	Mass Cloning Facility Holding
Emergency	

Standard Occupancy 3B	
QTY	Description
	Up to 2000 individuals.

Dimensions

The Dimensions of the Minori-Class Hospital Ship are:

- Length: 369.5 meters
- Width: (Fuselage) 120 meters
- Width: (Overall) 200 meters
- Height: 60 meters
- Decks: 14 (4 meters each)

Propulsion Statistics

3B as of [YE 44](#):

- [Integrated CFS Array](#): 0.1 to 19,000c
- [Yumeoibito Hyperspace Fold Drive](#): 0.75ly/m
- [Multi-Stage Aether Drive](#): 0.375c
- Ground Speed (Hovering): 600km/h
- Max. Atmospheric Speed
 - Unshielded: 🚀 [Mach 1.7](#)
 - Shielded: 🚀 [Mach 2.7](#)
 - Aerodyne-optimized Shielded³⁾: 🚀 [Mach 3.1](#)

3A from [YE 32](#) to [YE 44](#):

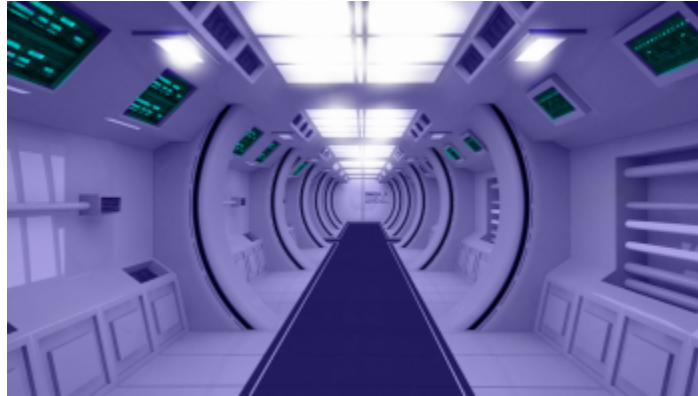
- Atmospheric: Cruise: 2,283 kmph (3,675 mph) Maximum: 6,125 kmph (3,806 mph)
- Turbo Aether Plasma .3c (~89,937 kilometers per second) (~55,884 miles per second)
- [Combined Field System/Continuum Distortion Drive](#):
 - Minimum: Resting motionless
 - Cruising Speed: 10,000c (~1.144 ly/h)
 - Maximum Speed: 12,500c (1.43 ly/h)
- Hyperspace Drive: 394,470c (0.75ly/m)

Inside the Ship

The inside of the long-serving and reliable Minori-Class Hospital Ship.

Getting Around Inside the Ship

The ship has [Standard Passageways](#), [Zero-Gravity Passageways](#) and [Standard Lifts](#) that provide access to most of the ship. Some system bays and engineering areas are only accessible by the network of [Maintenance Conduits](#) that run through the entire ship.



Deck Layout 3B

The Minori-Class Hospital Ship has 14 decks.

Minori-Class Hospital Ship Deck Layout 3B Version	
Deck#	Description
Mass Cloning Zone	
1	Mass Cloning and Temporary Holding
2	Mass Cloning and Temporary Holding
Hospital Zone	
3	Recovery and Longer Term Care
4	Science Laboratories
5	General Medicine, Specialty Clinics
6	Surgical Suites
7	Intensive Care Unit, Nekovalkyrja Treatment Center
Command and Crew Services Zone	
8	Crew Accommodations and Services
9	Crew Accommodations and Services, Bridge
Launch and Recovery Zone	
10	Combined Launch Facilities - Shuttle Bay, Triage Center and Registration, Express Lifts to Deck 6 and 7
11	Combined Launch Facilities - Shuttle Bay, Triage Center and Registration, Express Lifts to Deck 6 and 7
Cargo and Fabrication Zone	
12	Cargo Area, Fabrication Areas
Engineering Zone	
13	Engineering, Done Bays

Minori-Class Hospital Ship Deck Layout 3B Version	
Deck#	Description
Mass Cloning Zone	
14	Engineering, Done Bays, Soul Savior Pod Recovery

Deck 1 and Deck 2

The First and Second Decks of the Minori-Class.



Mass Cloning and Temporary Holding Facilities

An adaptation of the [Mass Cloning Facility, Type 30](#) consisting of [Hemosynthetic Reconstruction Tube](#) devoted to the production of [Nekovalkyrja](#) and the restoration of the fallen with [Memory Transfer and Backup Units](#). It also consists of comfortable waiting areas for recently restored personnel to await return to duty or the transfer of newly created [Nekovalkyrja](#) to their initial training programs.

Deck 3

The Third Deck of the Minori-Class.

Recovery and Longer Term Care



The Third Deck is devoted to recovery and patients who may need to be transferred to a larger [Star Army base](#) for longer-term or specialized care. The deck is divided into both private hospital rooms designed for officers or VIPs, and larger bays with multiple beds for all other patients. The environment inside of the private rooms can be adapted for various non-[Nekovalkyrja](#) species.

Each section of the deck has a dedicated nurses' station, along with several supply rooms with dedicated lifts to bring cargo up from the cargo hold. This deck and its respective sections contain the majority of the available beds devoted to patient care.

Deck 4

The fourth deck of the Minori-Class Hospital Ship.

Science Laboratories

The ship is equipped with an entire deck of [Combined Sciences Laboratories](#) devoted to testing and pathology. They can also be modified to accommodate for special mission profiles such as those that require the development and production of new medicines or vaccines.

Deck 5

The fifth deck of the ship.

General Medicine and Clinics

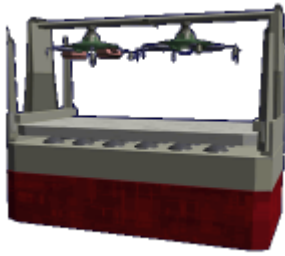
The fifth deck is devoted to [Internal/General Medicine](#), the ship's [Pharmacy](#) and [Morgue](#) as well as clinics such as:

- [Neurology](#)
- [Obstetrics and gynaecology](#)
- [Orthopedics](#)
- [Pathology](#)
- [Pharmacology](#)
- [Psychology](#)
- [Radiology](#)
- Other Mission Specialized Clinics

Deck 6

The sixth deck of the Minori-Class vessel.

Surgery



The surgery department on the Minori-Class Hospital Ship consists of several 🏥 [Operating/Surgical Suites](#) as well as [AMSUs](#) to perform both post battlefield surgical and general surgical procedures. Each suite can be adjusted to various environments and conditions ideal for non-[Nekovalkyrja](#) patients.

Deck 7

The seventh deck of the Minori-Class Hospital Ship.



Intensive Care Unit

The Intensive Care Unit (🏥 [ICU](#)) is devoted to the care of patients with severe or life-threatening injuries that require constant monitoring. Each section of the unit can be modified for the specialized treatment of various species.

Nekovalkyrja Treatment Center

The Nekovalkyrja Treatment Center or NCT consists of several specialized [Hemosynthetic Facilities](#) and [Hemosynthesis Tubes](#) dedicated to the healing of [Nekovalkyrja](#).

Decks 8 and 9

The eighth and ninth decks of the ship.

Standard Crew Accommodations and Services

These are the standard accommodations and amenities⁴⁾.

Accommodations		
Deck	Accommodations Type	Description
9	Command Suites	One Suite for the Star Army Starship Captain and one for the Star Army First Officer
9	Officer's Cabins	Accommodations for crew ranked Shoi Kohosei or higher.
8 and 9	Crew Cabins	Large crew cabins accommodate the majority of the ship's company.

The Minori-Class is rather light on amenities, it generally is a child ship when traveling with a fleet so the crew relies on the amenities offered on the larger ships.

Standard Amenities		
Deck	Amenities Type	Description
8	Star Army Onsen	A traditional social bath house.
8 and 9	Standard Star Army Crew Shower	The ship has both private shower rooms and communal ones.
8 and 9	Standard Star Army Crew Lounge	A comfortable place for the crew to gather off-duty.
8 and 9	Standard Star Army Galley	Star Army Cooks are always cooking up some grub here.
8 and 9	Standard Star Army Dining Hall	The dining hall is a place for the crew to eat and socialize.
9	Standard Star Army Wardroom ⁵⁾	A private dining room for officers.
8 and 9	Standard Star Army Laundry Room	The laundry rooms are a great place to clean dirty linens.

Bridge (Deck 9)

The Minori-Class uses the [Small Starship Bridge](#). The [Standard Star Army Armory](#) can be accessed via the port access corridor to the bridge, and the [Standard Computer Room](#) is located off the starboard side.

Deck 10 and 11

The tenth and eleventh deck of the ship.

Combined Launch Facilities

The combined launch facilities serve as a [Standard Star Army Power Armor Bay](#) and [Standard Star Army Shuttle Bay](#) combined. The facility also accommodates the loading of cargo into the Cargo Area located on the deck below, using elevators and adjustable tracks and robotic arms to transit [Standard Starship Cargo Containers](#) from one section to the other.

A set of [Power Armor Storage Racks](#) is located on the port side of the bay, with accommodations for up to 30 [Ke-M2 "Mindy" Series of Power Armor](#).

The fore-most section of the launch facility includes a 🏥 [Triage](#) facility where arriving patients are evaluated and registered before being transferred to other sections of the ship. There are dedicated express lifts that go to Decks 6 and 7.

Deck 12

The twelfth deck of the ship.

Cargo Area

The Minori-Class has a rather large [Standard Star Army Cargo Area](#). It is accessible through the second set of airlock doors and elevators from the Combined Launch Facilities which are located above it.

Theoretical Volume: If the Cargo Area was packed absolutely full it could accommodate ten [SSCC-Xtra Large](#) with five stacked side-by-side and two tall.

Deck 13 and 14

The thirteenth and fourteenth decks of the Minori Class.

Engineering

The Minori-Class deploys the modular and versatile [Standard Star Army Engineering Bay](#). It serves as a HUB for all the ship's subsystems and mechanical guts. Engineering is located on decks thirteen and fourteen.

Drone Bays and Soul Savior Pod Recovery (Deck 14)

The ship has a specialized drone bay and [Soul Savior Pod](#) recovery system which includes several [KFY Graviton Beam Projector](#) and an airlock.

Subsystems

The sub-systems and inner workings of the Minori-Class Hospital Ship.

Armor and Integrated Armor Systems

The hull is composed of [Yamataium](#), [Zesuaium](#), [Xiulurium](#)-coated [Zesuaium](#) and [Yamataium](#). The windows are made of transparent [Zesuaium](#). All interior passageways and rooms are surrounded by [Yarvex](#) sheeting.

Integrated Armor Systems

The integrated hull systems are as follows:

- [Integrated CFS Array](#), which provides propulsion in CDD, defense, and stealth operation.
- [Nodal Liquid Conduit System](#), a system which uses the femtomechanical nature of [Hemosynthetics](#). Assists with damage control and other functions. When the shuttle is landed, it can be hooked into the system of its host vessel or space station for greater efficiency for this system.
 - Advanced Damage Control - [Ketsurui Fleet Yards](#) brought in [Hemosynthologist, Shinichiro Tomoko](#) onto the design team to testbed a new capillary system for the interlocking [Yamataium](#) hull. Standardly [Star Army of Yamatai](#) ships have capillaries which deliver [hemosynth](#) to interlocking [Yamataium](#) plating which boosts the annealing properties of [Yamataium](#). The system has a tweak where the femtomachinery components are programmed to respond to osmotic conditions. A breach or damage to the armor creates a concentration gradient, which the femtomachinery is triggered to increase replication and flow along the gradient towards the damaged areas. This was first deployed in the [Ke-T10 "Fukuro" Multi-Role Shuttle](#).
 - The Matter Collection System - The MCS allows the ship to collect hydrogen molecules as it travels through space, which can be used to provide fuel or converted into higher elements for use in the [Nodal Liquid Conduit System](#). The MCS units can be shielded in combat with cover plates.

Power Systems

The ship is powered by decentralized [Aether](#) generators spread throughout the ship, the highest number of which are located in and around the engineering compartments. Due to the development of the ship during a time when there was a perceived threat from enemy development of systems that interfered with [Aether](#), the ship has several secondary [Quantum Foam Generators](#).

Electronics Suite

The Minori-Class Hospital Ship is equipped with the powerful [Warship Integrated Electronics System \(WIES\)](#), and all of its integrated sensors and a [Star Army Standard Communications Array](#).

Life Support and Emergency Systems

This vessel is equipped with the latest [Life Support Systems](#), which included the update in [YE 43](#) which included integration with the new [Nodal Liquid Conduit System](#).

The ship is also loaded with all [Star Army Standard Starship Emergency Systems](#) including [Star Army Escape Pod, Type 35 "Seizonsha"](#) and [Star Army Escape Pod, Type 41 "Kodate"](#) (If [NH-33M \(Miniature\)](#) are standardly part of the crew).

Propulsion Systems

The Minori-Class is equipped with an [Multi-Stage Aether Drive](#) for sublight applications, and it uses the [Integrated CFS Array](#) for [Continuum Distortion Drive](#) propulsion. The [Yugumo Corporation](#) contributed the [Yumeoibito Hyperspace Fold Drive](#). It has Maneuvering Thrusters ([ion thrusters](#)) that are used primarily for altitude adjustment, docking, and station keeping.

The hull-integrated nacelles which housed the [CDD Coils](#) for the 3B, now hold the components of the [Umikagami Subsurface Operations Suite](#) which allows the vessel to operate under the water. The [Sorakagami Aerospace Operations Suite](#) has also been included for atmospheric operations.

Weapons Systems

The Minori-Class has the following modest combat systems.

3B:

- 1 x Single Port Torpedo Launcher (Forward), Type 43 ([Ke-Z1 Series Anti-Starship Torpedoes](#)). Also capable of launching [Multi-Role Science Drone Type 43](#).
- 2 x ["Yakaze Series" Anti-Starship Turrets](#). (Tier 10, Light Anti-Starship Turrets)
- 8 x [Heavy Quad Anti-Mecha Cannons](#) (Tier 9, Heavy Anti-Mecha Cannons)
- 8 x ["Tachikaze" Point Defense Cannons Type 43](#) (Tier 6, Heavy Anti-Armor Cannons)

It also utilizes a [Scalable Graviton Beam Projector Array](#) mounted on the ventral-aft section of the ship.

Vehicle Complement

The 3A Series of the Minori-Class Hospital Ship has the standard vehicle loadout as follows.

- 10 [Ke-T10 "Fukuro" Multi-Role Shuttle](#) available in med-evac configuration.
- 20 [Multi-Role Science Drone Type 43](#).
- Up to 30 [Ke-M2 "Mindy" Series of Power Armor](#).

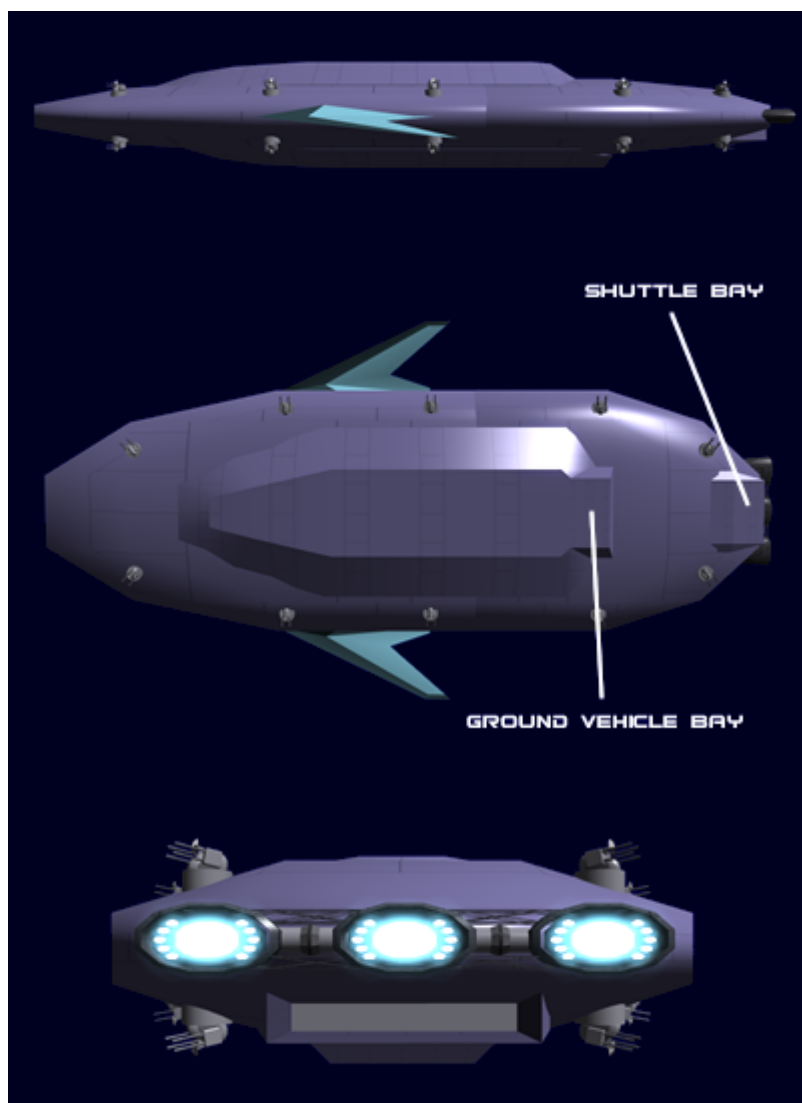
OOC Notes

Authored by [Nashoba](#) and approved by [Wes](#)⁶⁾ on Mar 20, 2010. [Andrew](#) updated this article on 2022/11/24 02:32. The update was approved by [Wes](#) on 2023/08/25⁷⁾.

- DOGA art is by [Nashoba](#).
- Interior Art is all by [Andrew](#) using Midjourney Bot in 2023.

Additional Nashoba Minori-Class Gallery

Check out some other Minori-Class images made by our Legacy Admiral [Nashoba](#).



Star Army Logistics	
Supply Classification	Class A - STARSHIPS
First Used	YE 32
Last Review	YE 45

Products & Items Database	
Product Categories	starships
Product Name	Minori-Class Hospital Ship
Nomenclature	Ke-L6-3B
Manufacturer	Ketsurui Zaibatsu
Year Released	YE 32
Price (KS)	270 ,000.00 KS
DR v3 max	Tier 10

1) 2)

majority will be [Star Army Medical](#) personnel.

3)

With [Sorakagami Aerospace Operations Suite](#)

4)

Plot ships and notable ships are encouraged to add custom areas

5)

The Command Wardroom has a notable large transparent [Zesuaium](#) viewport.

6)

<https://stararmy.com/roleplay-forum/threads/yamatai-minori-class-hospital-ship.5299/#post-78519>

7)

<https://stararmy.com/roleplay-forum/threads/ye-44-45-refit-for-the-minori-class-hospital-ship.70793/#post-439642>

From:
<https://wiki.stararmy.com/> - **STAR ARMY**

Permanent link:
https://wiki.stararmy.com/doku.php?id=stararmy:starship_classes:minor-class_medical_ship

Last update: **2023/12/21 01:02**

