

# Star Army Starship Classes

[Star Army of Yamatai](#) starships tend to be spear-point shaped and have wings of some sort; their bows usually end in a sharp point or in a double-prong design that is essentially a point with a cutout. They are blue-gray ( [Periwinkle](#) or [Ceil](#) ) or two-toned blue-gray and dark gray in coloration and bear the Star Army of Yamatai's "hinomaru" rondel, a red circle with a white border and a stylized power armor profile in the red; this emblem is typically positioned somewhere near the top center. Many starships use a number of standardized turrets positioned around the hull on circular mounting platforms. Modern Yamataian warships typically use glowing teal aether-based engines (some older ones are purple). The primary producer of most Yamataian starships is [Ketsurui Fleet Yards](#).

The Star Army re-evaluates its equipment on a 5-year cycle, and improvements or replacements are made as needed. This list consists only of ships *currently* used by the [Star Army of Yamatai](#) in a significant capacity. It does not include unique, captured, or phased-out items but may contain official notes on which items are still in use but are slated for upgrades or replacement. For equipment no longer in use by the Star Army of Yamatai, see [Obsolete Star Army Equipment](#). Most older ships are scrapped, as their military technology makes them unsuitable for releasing to the public.



Related articles:

- [Star Army Starship Size Chart](#)
- [Star Army Starship Interiors](#)
- [Star Army Starship Systems](#)
- [Star Army of Yamatai Starship Speeds](#)
- [Imperial Registry Numbers \(IRNs\)](#)

## Starbases

The Star Army uses several types of space-based installations. The centerpiece of most Star Army fleets is usually one or more *Star Fortresses*, which provide a large portion of the logistics and shipbuilding capability for each fleet.



- [Ge-H1-7A - Kōdaina Minato-Class Orbital Installation](#)
- [Kodoku-Class Mining and Processing Facility](#)
- ["Guriddo" Defense System](#)
- [Ikoi-Class Light Starbase](#)
- [Iori-Class Star Fortress](#)
- [Kisaki-class Starbase](#)
- [Mobile Assembly Platform](#) (5 total - outdated, needs replacement)
- [Orbital Geological Survey Platform](#)
- [Zodiac-Class Star Fortress](#)

## Starships

This section lists the current ship classes used by the Star Army of Yamatai.

### Capital Ships

Capital ships include most battleships, cruisers, carriers, command ships, and flagships.

- [Izanagi-Class Dreadnought](#)
- [1 Amatsuotome Expeditionary Command Cruiser](#) ([Fifth Fleet](#)'s Amatsuotome is the only one of this class)
- [Ayame-class Cruiser](#) (Outdated - needs modernization or replacement)
- [Yamato-Class Flagship](#)
- [Chiharu-class Flagship](#) (Outdated - needs modernization or replacement)
- [Super Eikan-class Heavy Cruiser](#)
- [Heitan-Class \(1B\) Carrier](#)
  - [Heitan-class Carrier](#) (Outdated - replacement is now available. Fleets advised to refit to 1B)
- [Sharie-class Battleship](#) (New 1D version available in late [YE 44](#))<sup>1)</sup>
- [Takumi-Class Expeditionary Command Cruiser](#) (New 2A version available in [YE 43](#))
- [Hammerfist Heavy Cruiser](#) (Kodians)

## Escorts and Gunships

- [Chiaki-class \(1A\) Escort Destroyer](#) (Tier 11)
  - [Chiaki-class \(1B\) Escort Destroyer](#) (Tier 11)
- [Irim-class Heavy Gunship](#) (Tier 12) (Obsolete, replace with Super Eikan)
- [Plumeria-class \(2D\) Medium Gunship](#) (Tier 11)
  - [Plumeria-class \(2E\) Medium Gunship](#) (Tier 11)
- [Azusa-class Light Gunship](#) (Tier 11)
- [Hayai-Class Gunboat](#) (Tier 10)
- [Fuji-class Expeditionary Gunship](#) (Tier 12)
- [Urufu-Class Light Cruiser](#) (Tier 12)

## Scouts and Special Operations

- [Nozomi-class Scout](#) (Discontinued - use until exhausted, replace with Midori)
- [Midori-Class Scout Ship](#)
- [Yui 7-class Scout](#) (Conversion from earlier Yui models only; replace with Midori)
- 50 [Eye-III Class Stealth Corvette](#)

## Troop Transports

- [Kagai-Class Assault Ship](#) - New
- [Sydney-class Infantry Carrier](#) (Replace with Kagai)
- [Type 31 Dropship](#)

## Cargo Ships and Freighters

- [Courier 2B Star Army Freighter](#)
- [Shuryoku-Class Super Freighter](#) (1B is for Star Army; Automated, Super Freighter)
- [Nibasha-Class Heavy Freighter](#)
- [Odori-class Medium Freighter](#) (Obsolete)
- 200 [Origin Starliner](#)

## Colony Ships

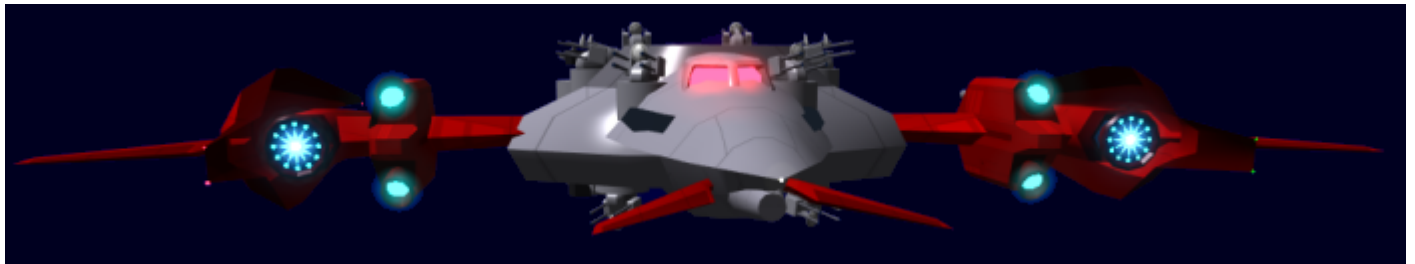
- [Ayame Layer-class Logistics Ship](#) (Obsolete, please phase out of use)
- 3 [Hummingbird-class Colony Ship](#) (Discontinued)
- [Yamashuto-class Colony Ship](#)

## Specialized Ships

- [Anri-Class Deep-Space Repair Vessel](#) (Obsolete, please phase out of use)
- [Asuga-Class Tug](#) - New Tug Ship.

- [Henry Chen-class Training Ship](#)
- [Kainushi-Class Tug Vessel](#)
- [Kaseron-class Heavy Lifter](#)
- [Kyaa-class Search and Rescue Vessel](#)
- [Minori-Class Hospital Ship](#) (New 3A version available in [YE 45](#))
- [Nougaku-Class Agriculture Vessel](#)
- [Rikei-Class Science Vessel](#) (New 2A version available at the start of [YE 45](#))<sup>2)</sup>

## Starship Systems



Related articles: [Star Army Starship Interiors](#)

## Starship Propulsion

- [Combined Field System](#)
- [Turbo Aether Plasma Drive](#)

## Starship Ordnance

- [Ke-Z1 Series Anti-Starship Torpedoes](#)
- [Ke-Z2 Strategic Aether Bomb](#)

## Starship Weapon Systems

These are commonly found on various Star Army warships:

- [Array, "Mini-Striker"](#)
- [Array, "Striker"](#)
- [Cannons, Positron Tunneling](#)
- [Common Missile Launchers](#) (S2-W3002 and WA-06i)
- [Pods, Aether](#)
- [Pods, Variable Weapons](#)
- [Projected Energy Beams \(CFS\)](#)
- [Transposition Fold "Legacy" Cannon](#)
- [Type 31 Heavy Anti-Starship Turret](#)

- [Ke-S3-W3101 Type 31 Secondary Anti-Starship Turret](#)
- [Ke-S3-W3102 Star Army Anti-Fighter Turret, Type 31](#)
- [Type 32 Medium Anti-Armor Turret](#)

## Small Craft

See: [Star Army Small Craft](#)

## OOC Notes

[Wes](#) made this page. For discussion see [Starships In Service](#).

<sup>1)</sup>

Updated at the end of [YE 44](#)

<sup>2)</sup>

Updated at the end of [YE 44](#).

From:

<https://wiki.stararmy.com/> - **STAR ARMY**

Permanent link:

[https://wiki.stararmy.com/doku.php?id=stararmy:starship\\_classes](https://wiki.stararmy.com/doku.php?id=stararmy:starship_classes)

Last update: **2023/12/20 18:22**

