

Autonomous Medical Treatment Center

The Autonomous Medical Treatment Center (AMTC) became available in [YE 31](#).

About the AMTC

The AMTC is a customizable automated medical center which can be expanded to fulfill the customers desired capabilities. It is designed to provide medical care without needing medically trained personnel on hand. The AMTC installations can be:

- A stand alone installation in a building or a starship.
- A compliment to a manned facility to augment capabilities during crises.
- Subcomponents can be added to existing facilities or installed independently.
- An AMTC installation can be as small as a single [Autonomous Basic Medical Unit](#) on a small craft, or a fully automated hospital.
- Can be configured to deploy to a disaster sites and start providing medical care within minutes of arriving on site.

History

The AMTC was the creation of [Jalen Sune](#) developed as a way of filling the medical needs for ships and planetary installations that is easily expandable. Having served on a small civilian vessel, [Jalen Sune](#) saw a definite requirement for medical care without trained personnel. His original concept was for a single unit that could provide complete medical attention, but during the design stage communications with [Ketsurui Zaibatsu](#) he realized that creating units designed for specific purposes would allow those units to perform them better than making a single system that attempted fulfill all needs.

The AMTC went into usage during the [Second Mishhuvurthyar War](#), as a way to counter the [Mishhuvurthyar](#) tactic of having an infected wounded person infect the medical staff and spread out.

Statistical Data

General

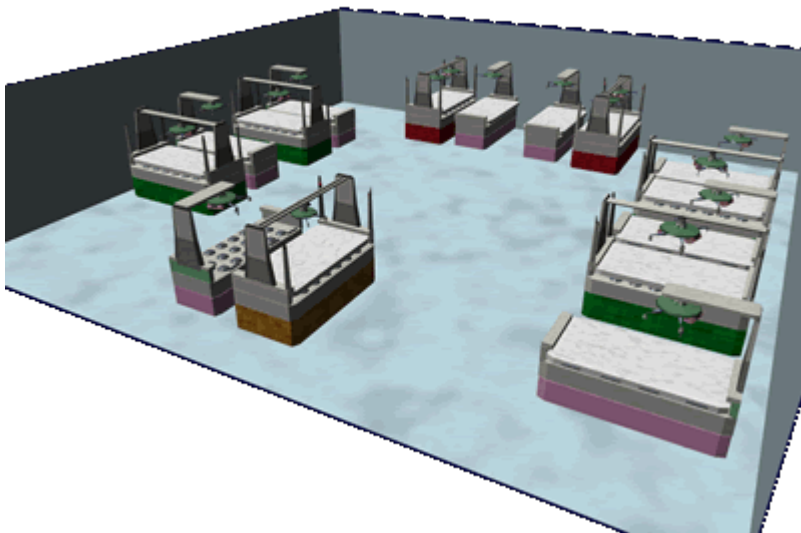
Organization Using This item: [Star Army of Yamatai](#), Yamatai government agencies, and Civilians Type: Medical Center Nomenclature: Ke-J1 Designers: [Ketsurui Zaibatsu](#) Research and Development teams, [Jalen Sune](#) Manufacturers: [Ketsurui Zaibatsu](#), [Star Army of Yamatai](#) Date entered service: [YE 31](#)

Supported species

Currently the AMTC is capable of providing full medical services to the following species:

- [Human](#)
- [Yamataian](#)
- [Minkan](#)
- [Nekovalkyrja](#)
- [Nepleslian](#)
- [Elysian](#)

A Basic AMTC Configuration



A typical AMTC contains the following:

- 1 Ke-J1-E3100 - Autonomous Triage Unit (ATU)
- 8 Ke-J1-E3101 - Autonomous Nurse Unit (ANU)
- 4 Ke-J1-E3102 - Autonomous Basic Medical Unit (ABMU)
- 2 Ke-J1-E3103 - Autonomous Surgical Medicine Unit (ASMU)

AMTC units have colored panels on the base to distinguish the type of unit.

AMTC Standard Units

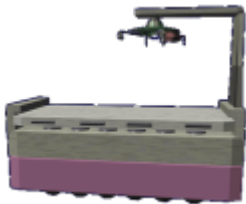
Ke-J1-E3100 - Autonomous Triage Unit

- View details on the [Autonomous Triage Unit](#)



Ke-J1-E3101 - Autonomous Nurse Unit

- View details on the [Autonomous Nurse Unit](#)



Ke-J1-E3102 - Autonomous Basic Medical Unit

- View details on the [Autonomous Basic Medical Unit](#)



Ke-J1-E3103 - Autonomous Surgical Medicine Unit

- View details on the [Autonomous Surgical Medicine Unit \(ASMU\)](#)



AMTC Optional Units

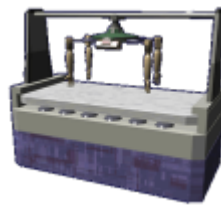
Ke-J1-E3104 - Autonomous Orthopedic Medicine Unit

- View details on the [Autonomous Orthopedic Medicine Unit \(AOMU\)](#)



Ke-J1-E3105 - Autonomous Massage Unit

- View details on the [Autonomous Massage Unit \(AMU\)](#)



Ke-J1-E3306 - Autonomous Configurable Medical Unit

- View details on the [Autonomous Configurable Medical Unit \(ACMU\)](#)



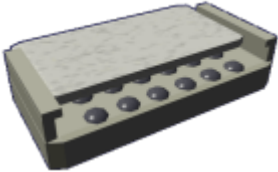
Common Components

Each of the AMTC units have the following common components:

- [Computer Program Module](#) with appropriate programming and networking to other units.



- [Detachable Patient Platform \(DPP\)](#)



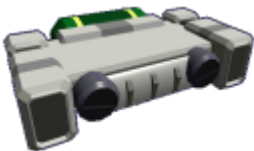
- [Scanner nanomachines](#) developed for the [Portable Medical Scanner PMS-1M](#).
- [Medical equipment unit](#) with medical tools for the specific application.



- [Self-contained Emergency Power \(SEP\)](#)



- [Containment Force Fields](#)
- [Integrated Atmosphere System](#)



- [Integrated Decontamination System](#)

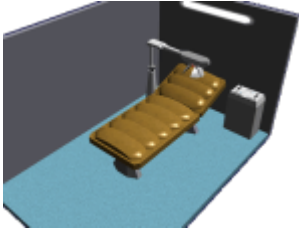
Other Systems

For larger hospital sized installations, the AMTC can be interfaced to a [PANTHEON](#) capable mainframe to

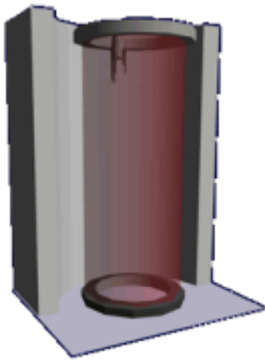
track patient status.

While not components of the AMTC it can be interfaced with the:

- [Type 30 Mental Transfer and Backup Unit](#)



- and [Hemosynthetic Reconstruction Tubes](#).



From:
<https://wiki.stararmy.com/> - **STAR ARMY**

Permanent link:
https://wiki.stararmy.com/doku.php?id=stararmy:interiors:autonomous_medical_treatment_center

Last update: **2023/12/21 01:02**

