

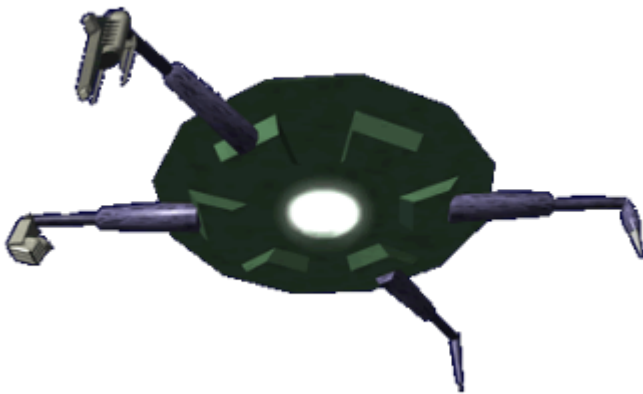
AMTC - Medical Equipment Unit

The Medical Equipment Unit (MEU) is subcomponent of the [Autonomous Medical Treatment Center \(AMTC\)](#) and became available in [YE 31](#).

The MEU is customized depending on which [AMTC](#) unit it is installed into.

Note: In [YE 33](#) the MEU MKII was released, it featured more slender, lifelike arms to do the work. The arms are covered in a synthetic compound that resembles skin.

MEU MK I



MEU MK II

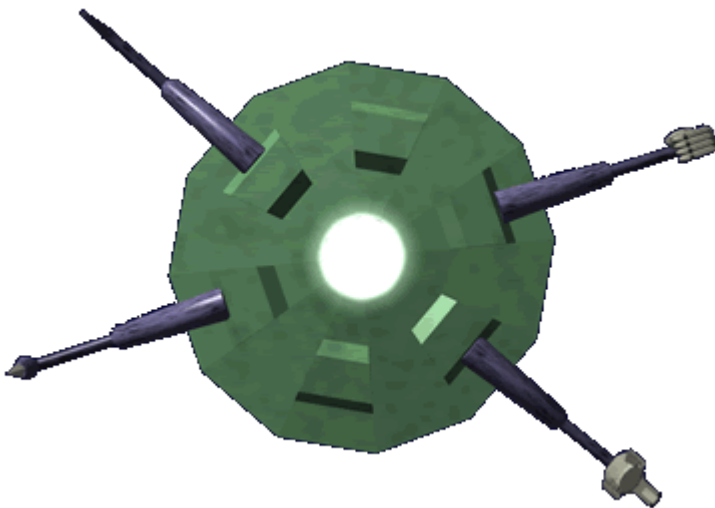


Dimensions



These dimensions are for the core of the MEU, the portion of the unit that is green. Length: .61 meters (2 feet) Width: .61 meters (2 feet) Height: 22.5 centimeters (9 inches)

Details



The MEU has the following capabilities:

- Up to six limbs attached to it, the limbs are strong enough to move the patient as necessary
- Integrated work lamp
- Attachments for the MEU are stored in the upright end panels of the [AMTC](#) units, or in storage units attached to the MEU. Additional attachments can be stored in a cabinet nearby.

Attachments

Diagnostic

- Ultrasound

- Thermal imager
- Compact x-ray
- [Scanner nanomachines](#)
- Electrocardiograph
- Electroencephalograph
- Thermometer

Instruments

- [Healing Blood Injector](#), 0.5 Liters (for internal injuries)
- Hypospray injector
- [Laser Scalpel](#)
- Clamp
- Delicate work robotic hand
- Forceps
- Tweezers
- Suture kit (for sewing wounds shut)
- Irrigation Syringe
- Rib spreader
- Bone saw (electric)

Supplies

- [Liquid Bandage](#) Sprayer (for external injuries and burns)
- IV Kit
- Bandage
- Gauze Pad
- Needle
- Saline solution bag
- Tube

Drugs

- [Drugs as available](#)

From:
<https://wiki.starmy.com/> - **STAR ARMY**

Permanent link:
<https://wiki.starmy.com/doku.php?id=starmy:equipment:amtc:meu>

Last update: **2023/12/21 04:26**

