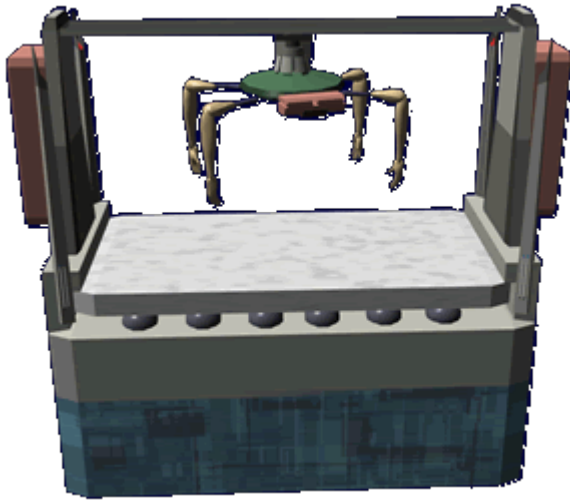


Ke-J1-E3301 - Autonomous Configurable Medical Unit

The Autonomous Configurable Medical Unit (ACMU) was added to the [Autonomous Medical Treatment Center \(AMTC\)](#) offering and became available in [YE 33](#).



About the ACMU

The ACMU capitalizes on the fact that the AMTC's modularity. By swapping out the accessories the unit is capable of serving as the following:

- [Ke-J1-E3102 - Autonomous Basic Medicine Unit \(ABMU\)](#)
- [Ke-J1-E3103 - Autonomous Surgical Medicine Unit \(ASMU\)](#)
- [Ke-J1-E3104 - Autonomous Orthopedic Medicine Unit \(AOMU\)](#)
- [Ke-J1-E3105 - Autonomous Massage Unit \(AMU\)](#)

History

The ACMU is the result of a discussion that [Jalen Sune](#) had with his commander [Hanako](#). It was designed with two purposes in mind. One was to allow a single unit to be able to perform all of the operations of specific other AMTC units. It was not intended to replace them, but rather to minimize the number required on vessels with a limited space. Also a spare ACMU could be stored elsewhere on a ship to serve as an emergency backup should the medical bay be destroyed.

Using the ACMU

Then the ACMU is initialized it come up in [\(ABMU\)](#) mode. The operator can then instructed the unit to switch to one of the other modes if necessary. When this happens the unit while downloading swaps out the various tools and implements that required for the requested mode. These items are stored in the over-sized storage modules on either end of the ACMU. Switching modes takes approximately one minute.

Statistical Data

General

Organization Using This item: [Star Army of Yamatai](#), Yamatai government agencies, and Civilians Type: Medical Center Nomenclature: Ke-J1-E3301 Designers: [Ketsurui Zaibatsu](#) Research and Development teams, [Jalen Sune](#) Manufacturers: [Ketsurui Zaibatsu](#), [Star Army of Yamatai](#) Date entered service: [YE 33](#) Price: 12,000 [KS](#)

Supported species

Currently the ACMU is capable of providing full medical services to the following species:

- [Human](#)
- [Yamataian](#)
- [Nekovalkyrja](#)
- [Nepleslian](#)
- [Elysian](#)

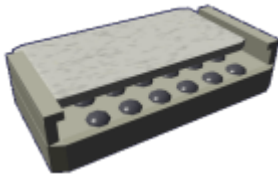
Common Components

The ACMU has the following components:

- [Computer Program Module](#) the ACMU has access to the programming supplied for the [\(ABMU\)](#), [\(ASMU\)](#), [\(AOMU\)](#), [\(AMU\)](#). The programming is stored in a large volume storage device. The ACMU must stop what it is doing, and download the appropriate data modules if it is switched to a different mode.



- [Detachable Patient Platform \(DPP\)](#)



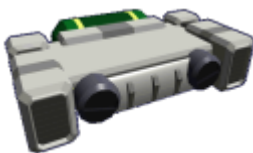
- [Scanner nanomachines](#) developed for the [Portable Medical Scanner PMS-1M](#).
- The ACMU has an upgraded [Medical equipment unit](#) that features new enhanced arms. This allows it to access medical tools for the specific application. Examples are:
 - Hypospray injector
 - [Laser Scalpel](#)
 - Thermal imager
 - Compact x-ray



- [Self-contained emergency power](#)



- [Containment Force Fields](#)
- [Integrated Atmosphere System](#)



- [Integrated decontamination system](#)

From:

<https://wiki.stararmy.com/> - **STAR ARMY**

Permanent link:

<https://wiki.stararmy.com/doku.php?id=stararmy:equipment:amtc:acmu>

Last update: **2023/12/21 04:26**

