

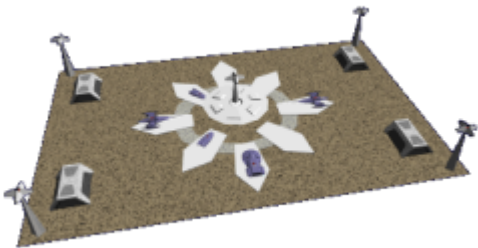
Frontier Starport

The Frontier Starport was originally introduced in [YE 32](#) as a standard facility complex for the [Star Army of Yamatai](#). It was updated in [YE 44](#).

Frontier Starport	
	
Year of Creation	YE 32
Designer	Ketsurui Zaibatsu , Ketsurui Fleet Yards
Nomenclature	Ke-P6-2A
Manufacturer	Ketsurui Fleet Yards
Fielded by	Star Army of Yamatai and Yamatai Star Empire
Availability	Limited Production, As Needed.
Price	Starting at 220,000,000 KS ¹⁾

History and Background

The Frontier Starport was first developed by the [Fourth Fleet](#) of the [Star Army of Yamatai](#) in [YE 32](#), while they were fortifying their hold on the [Bard Cluster](#) region of the [Yamatai Star Empire](#). The design has since grown in popularity, and has become a standard for starports across the [Yamatai Star Empire](#); they are used by both the military and civilians. The Frontier Starport design was given an update in [YE 44](#), with plans to have all facilities updated by the middle or end of [YE 45](#).



Description

The Frontier Starport is not a pre-fabricated base, but rather a group of pre-fabricated structures and common designs. It is designed to be built as quickly as possible and brought operational in a timely manner. The design is consistent from location to location with some minor variations and customizations occasionally thrown in due to local requests. ²⁾

Contact

Each Frontier Starport should have a [Star Army Communications Specialist](#) assigned to be the contact for the starport.

Terminal Complex and Control Tower

The main building at the Frontier Starport is the Terminal Complex and Control Tower.

Terminal Complex and Control Tower	
Nomenclature	Ke-P6-M4400
Damage Rating	Tier 15
Level	Description
B	Underground Cargo Facility, Systems Area, Connections to Landing Area Maintenance Bays
G	Customs Enforcement , Cargo Handling and Elevators to Underground Cargo
1	Civilian and Star Army of Yamatai Terminals, Civilian and Star Army of Yamatai Power Armor Bays, Restaurants and Services
2	Star Army Emergency Services , Autonomous Medical Treatment Center
3	Starport Crew Residence and Support
4	Control Tower

Underground Cargo Facility

Cargo Lifts from the ground level deliver [Cargo](#) to the underground cargo facility. [Star Army Logistics](#) organizes the inspection, storage and distribution of [Cargo](#) that arrives at the facility. The cargo elevator can handle [Standard Starship Cargo Containers](#) up to [SSCC Large](#).

Maximum capacity of the underground cargo facility would theoretically be one hundred [SSCC Large](#) or assortments of [Standard Starship Cargo Containers](#) of smaller sizes to that same volume.

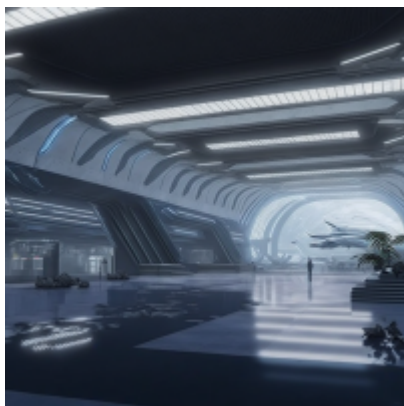
Systems Area

The underground Systems area contains all subsystems for the Starport. It also has a [Standard Computer Room](#) that houses the Starport's [MEGAMI](#).

Connections to Landing Area Maintenance Bays

Underground tunnels connect the Terminal Complex and Control Tower to the Underground Maintenance facilities beneath the landing area.

Civilian and Star Army Terminal Facilities



A comfortable terminal facility for the [Star Army of Yamatai](#) and civilians. The terminals have flight information for [PAINT](#) as well as any [Star Army of Yamatai](#) ships that are arriving or departing the facility. It features a comfortable polished gray and periwinkle blue color scheme, with ferns and other decorative plans and comfortable chairs for those waiting for flights.

[PAINT](#) ticket offices and information booths are located in the terminal. There is also a small area for personal luggage that is off loaded from crafts which is cycled on conveyor belts and secure storage lockers are available for those who don't want to carry their luggage around during layovers.

Passengers are welcome to connect to [SYNC](#) or [PANTHEON](#) depending on their access level. Various dining options and services are offered to passengers.

Common Services

The following services are generally offered.

- [Star Army Dojo](#)
- [Star Army Standard Fitness Center](#)
 - [Star Army Onsen](#)
- [Star Army Ship's Store](#)
- [Standard Star Army Post Office](#)
- [Star Army Surplus Store](#)
- [Standard Star Army Laundry Room](#)
- [Iga Fancy Fruit Emporium](#)
- [Kagayaki Cosmetics Day Spa](#)
- [Yuuko's Undies](#)

Common Dining Options

The following dining options are available.

- [Kikyo Pie Company](#)
- [Tachi's](#)
- [Tokyo Brewing Company](#)
- [Sea Of Plenty](#)
- [Doki Doki YSA!](#)
- [Meat On A Stick](#)

Power Armor Bays

A [Standard Star Army Power Armor Bay](#) outfitted for receiving [Ke-M2 "Mindy" Series of Power Armor](#), [Yoru no Tenshi 'Tenshi II' Light Mechanized Power Armor](#), and other common power armors.

Emergency Services

[Star Army Emergency Services](#) have their operations office for starport on the second level. It also includes a [Autonomous Medical Treatment Center](#) designed to handle most medical emergencies at the starport. A small number of [Hemosynthetic Reconstruction Tube](#) are also placed in these facilities. A very small full-time staff of [Doctors and Medics](#) are usually on duty as well.

Starport Crew Residences and Support

The following standard residential and support facilities are available.

- [Starport Commander's Suite.](#)
- [Starport Officer's Cabins](#)
- [Starport Crew Bunks.](#)
- Several [Standard Star Army Toilet.](#)
- Several [Standard Star Army Crew Shower](#)

- [Standard Star Army Galley](#)
 - [Standard Star Army Dining Hall](#)
 - [Standard Star Army Wardroom](#)
- [Starport Armory](#)

Control Tower



On the very top level of the complex is the control tower. It serves as the command center for the entire starport and also handles all flight control and communications functions for arriving and departing vessels. The Control tower also usually coordinates with local [Yomawari-Class NavComm Buoy](#) to ensure proper information about the region is transmitted.

The control tower is manned similarly to a [starship bridge](#), including a command chair for the Starport's Commander.

The control tower has priority access to the Starport's [MEGAMI](#) and its integrated suite of sensors and the [Star Army Standard Communications Array](#).

Landing Area and Underground Maintenance Bays

The operations area of the Frontier Starport.

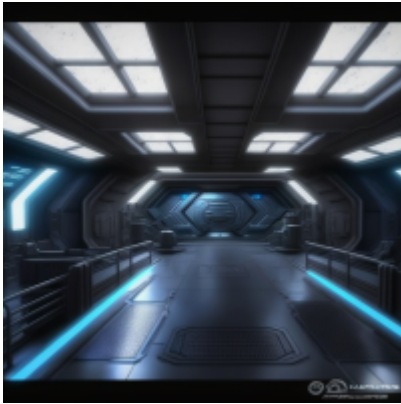
Landing Area and Underground Maintenance Bays	
Nomenclature	Ke-P6-M4401
Level	Description
Damage Rating	Tier 15
G	Landing Platforms and Tarmac Services
B	Underground Maintenance Bays

Landing Area

A large tarmac area consisting of eight landing platforms, staging areas as well as transit lanes that accommodate the arriving and departing starships. In [YE 44](#) the previously installed anti-gravity systems were upgraded and [Scalable Graviton Beam Projector Array](#) were added to assist damaged ships with positioning control.

[Star Army Emergency Services](#) runs ground control operations for firefighting and medical response when required.

Underground Maintenance Bays and Hangars



Each of the eight landing platforms is equipped with an elevator designed to bring the craft down to the underground maintenance bays and then back up to the surface. These underground maintenance bays serve as small shipyards for smaller [Star Army of Yamatai](#) vessels; generally the [Plumeria-class \(2E\) Medium Gunship](#) or smaller landing capable ships and small craft. [Star Army Technician](#), [Ketsurui Fleet Yards](#) Technicians as well as Technicians from [Yugumo Fleetworks](#) are generally present at most Starports.

The dimensions of each underground bay are 325m long x 250m wide x 125m tall.

Additional sheltered cargo elevators and [Cargo](#) transit corridors lead to the main underground cargo facility. This was upgraded in [YE 44](#), as the previous [YE 32](#) build had the cargo divided into four underground cargo facilities instead of one central one.

Defenses

The following defensive systems protect the Frontier Starport.

[YE 44](#) upgrade:

- (8) [Ke-P3 Armed Towers](#)

[YE 32](#) version:

- (4) [Ke-P3 Armed Towers](#)

Starport Standard Vehicle Compliment



Small craft units are stored in an underground hangar facility at the south end of the landing area. They have elevators to transport them to the surface for launch and recovery.

- (50) [Ke-T10 "Fukuro" Multi-Role Shuttle](#) (Various Configurations)
 - Cargo Configuration
 - Transport Configuration
 - Medical Evacuation
 - Small Team Deployment
 - VIP Configuration
- (24) [Ke-V8 "Super Kwarime" Fighter](#)
- (12) [Ke-V7 "Ginga" Bomber](#)
- (12) [Ke-V6-2A "Hayabusa II" Starfighter](#)

Ground Units

Several Vehicles are stored in the underground hangar as well.



- 50 [Star Army Ke-K3 Forklift](#)
- 20 [Type 30 Cargo Truck](#)
- 20 [Type 30 Container Handling Vehicle](#)

- 20 [Artillery Trailer, STV, Type 31](#)
- 100 [Light Surface Terrain Vehicle, Type 42](#)
- 2 [Utility STV](#)
- 2 [STV Wrecker](#)

Optional additions:

- [K-1 Bulldog/Type 41 Main Battle Tank](#)

Standard Sub-Systems

Frontier Starports are equipped with the following subsystems.

Armored Building and Integrated Armor Systems

The buildings are composed of a [Zesuaium](#) frame with interlocking [Yamataium](#) plating. Interior compartments are coated in [Yarvex](#). [Xiulurium](#) coating is applied to reduce sensor signatures to make base structures harder to detect by enemy craft.

- Advanced Damage Control - [Ketsurui Fleet Yards](#) brought in [Hemosynthologist, Shinichiro Tomoko](#) onto the design team to testbed a new capillary system for the interlocking [Yamataium](#) hull. Standardly [Star Army of Yamatai](#) ships have capillaries which deliver [hemosynth](#) to interlocking [Yamataium](#) plating which boosts the annealing properties of [Yamataium](#). In the update design the system has a tweak where the femtomachinery components are programmed to respond to osmotic conditions. A breach or damage to the armor creates a concentration gradient, which the femtomachinery is triggered to increase replication and flow along the gradient towards the damaged areas.

Power Systems

The Starport is equipped with several decentralized [Aether](#) powerplants. An integrated capacitor system includes up to three days of emergency power as a backup system. There are also interfaces for portable aether generators in the event it is required.

Electronics System

The Frontier Starport is equipped with a [MEGAMI](#) level [PANTHEON](#) suite with a fully array of integrated sensor systems and a [Star Army Standard Communications Array](#).

A [KAIMON-Prime Gate](#) system is provided for civilian use and gateways to [SYNC](#). It also serves as a backup in the event [MEGAMI](#) is damaged or inoperable.

Life Support and Emergency Systems

The Frontier Starport is equipped with [Star Army Standard Life Support Systems](#) and [Star Army Standard Emergency Systems](#).

OOC Notes

This page was originally created by [Wes](#) on 2011/06/18 12:23. [Andrew](#) updated this article on 2022/11/14 15:58.

- Original DOGA Art by [Wes](#).
- LSTV Art by [Kai](#)
- Starport Interiors and Cinematic shot done in Midjourney by [Andrew](#).
- Fukuro-Class Shuttle illustration is a commissioned artwork by Adam Kop.
- Update approved by [Wes](#) on 2022/11/17.³⁾

Star Army Logistics	
Supply Classification	Class N - MISC
First Used	YE 32
Last Review	YE 44
Places of the SARPiverse	
Place Categories	military facility

¹⁾

Estimated value, [Star Army of Yamatai](#) and [Yamatai Star Empire](#) use only

²⁾

You can make [Places](#) submission using one of these structures using the [Places Template](#).

³⁾

<https://stararmy.com/roleplay-forum/threads/page-update-frontier-starport.69608/#post-431542>

From:

<https://wiki.stararmy.com/> - **STAR ARMY**

Permanent link:

https://wiki.stararmy.com/doku.php?id=stararmy:bases:frontier_starport

Last update: **2024/05/19 15:20**

