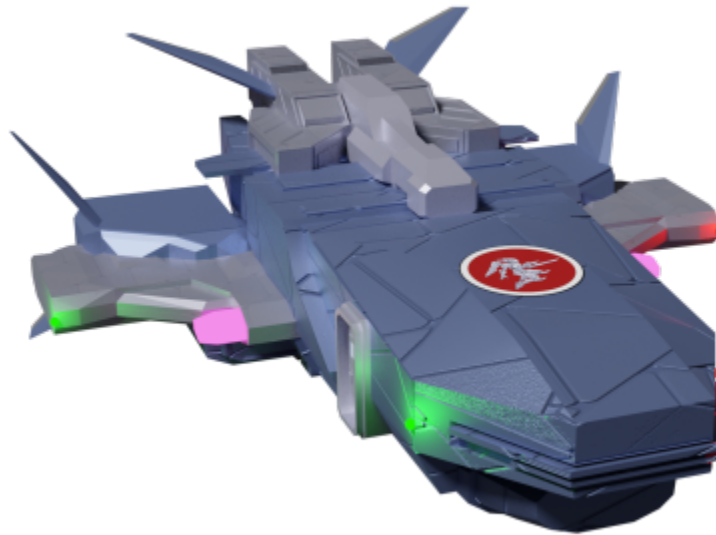


Mōkin-Class Patrol Craft (1B)

A fast patrol craft that is agile, armored, and surprisingly comfortable.



About the Mōkin-Class Patrol Craft (1B)

The 1B variant of the [Mōkin-Class Patrol Craft](#), outfitted to [Star Army of Yamatai](#) standards. Mōkin (猛禽) means “raptor” or “bird of prey” in [Yamataigo](#).

Mission Specialization

This ship is ideal for fulfilling the following mission profiles.

- Security Patrols
- Ship Escort
- Interception
- Close Air Support

Appearance of the Mōkin-Class

With the typical [Yugumo Fleetworks](#) combination of sleek and chunky, the Mōkin features sharp angles and an aggressive, somewhat maritime look. Even if more angular and less curved than ships like the [Misha](#), it still fits in well with the [current design ethos](#).

With the exception of the systems upgraded to [Star Army of Yamatai](#) standards, the interior is identical to the [base model](#).

Statistics and Performance

The Mōkin-Class Patrol Craft 1B is a high-performance patrol craft that does not compromise on endurance, speed, maneuverability, or firepower.

General Statistics

- Class: [Yu-V1-1B](#)
- Type: Patrol Craft
- Designers: [Yugumo Fleetworks](#) and [Osman Heavy Industries](#)
- Manufacturer: [Yugumo Corporation](#), [Jiyuu System](#)
- Fielded by: [Star Army of Yamatai](#)
- Production: Mass Production

Passengers

- **Crew:** 1 individual required, 2 individuals for recommended operation.
- **Maximum Capacity:** About 12 people can fit aboard in an emergency, but the ship would be extremely cramped.

Dimensions

- Length: 16 meters (52.5 feet)
- Width: 14 meters (45.93 feet) widest, 6m (19.69 feet) fuselage
- Height: 3.5 meters (11.48 feet)
- Decks: 1.5 (2.25m high)

Propulsion and Range

The military-spec upgrades to this variant bring the Mōkin-Class in line with [Star Army of Yamatai Starship Speeds](#).

- [Mizu II Series - Nami II CDD](#): 18,750c
- [Yumeoibito Hyperspace Fold Drive](#): 0.75ly/m
- [Multi-Stage Turbo Aether Plasma Drives](#): 0.375c
- Ground Speed (Hovering): 390km/h
- Max. Atmospheric Speed: 🌀 [Mach 1.99](#)
- Range: Unlimited

- Lifespan: Review every 10 years
- Refit Cycle: Every 5 years or as needed

Damage Capacity

See [Damage Rating \(Version 3\)](#) for an explanation of the damage system.

- Hull: Tier 8 (Medium Mecha)
- Shields: Tier 8 (Medium Mecha)

SAoY Variant

The [Star Army of Yamatai](#) variant differs from the [civilian 1A variant](#) by the installation and upgrades of a few additional, restricted systems. Many of these systems are taken from the [Ke-V9 "Nodachi" Assault Fighter](#).

The [SAoY](#) variant's [nomenclature](#) is Yu-V1-1B.

- A bank of [Geshrinari Aether Generator](#) is installed in the power section of [engineering](#). They are primarily used to supply the drives and weapons systems with aether, while the [QF Generators](#) power less intensive systems.
- The primary engines are upgraded to [Multi-stage Turbo Aether Plasma Drives](#).
- The [Combined Field System](#) is provided by an [Integrated CFS Array](#), freeing the nacelles for additional systems.
- A [Geshrinari Psionic Signal Controller](#) is installed per regulations.
- [Star Army Standard Life Support Systems](#) are installed as the primary, leaving the [default](#) as a backup.
- A [Compact Integrated Electronics System \(CIES\)](#), along with its sensors, is installed as the master system. The [KAIMON-Portal](#) is relegated to a secondary system for backup and ancillary or auxiliary computing. Much like the [Amatsuomame's secondary "Destiny" computer](#), [KAIMON](#) handles most of the administrative functions on board the ship, taking priority on the daily running of the systems and personnel, as well as fleet management duties. Its sensors and communications are secondary, used mainly as a backup system in case the primary systems become damaged or otherwise inoperable, while the [KAMI](#) performs most of the tactical and strategic functions and is the the primary sensor and communications package.
- [Star Army Bunk Bed, Type 40](#) are upgraded from the *Deluxe* to the *Military* variant.
- Seats and stations are upgraded to have compatibility with [SPINE](#).
- The cargo area at the back may be used to deliver [Ke-Z2 Strategic Aether Bomb](#), holding up to 16.
- Countermeasures packages from the [Ke-V9 "Nodachi" Assault Fighter](#) have been added
 - [Ke-V9-W3302 Integrated Aether Flare Launcher](#)
 - [Ke-V9-W3303 Integrated Anti-Radar Chaff Dispenser](#)

Signature Reduction and Stealth

The armor layer is impregnated with an [Omnihue](#) matrix, allowing effectively unlimited control over the coloration, pattern, text, and insignia of the surface. This serves as thermoptic camouflage and signature reduction, if set properly. The inclusion of the [Type 44 Star Army Electronic Warfare Suite](#) increases these capabilities by utilizing [Xiulurium](#) to replace the [Sitearium](#) coating on the 1A variant, and leveraging the stealth capabilities of the [ICFS](#).

Computers and Electronics

The *Mōkin*-class Patrol Craft (1B) is equipped with [Compact Integrated Electronics System \(CIES\)](#) as the master system, with its included communications, targeting, interface, and sensor systems. [KAIMON](#) is still installed, but it plays a secondary role and serves to facilitate the [ELECTRA-Passage](#). It also has the uplink and [PANTHEON/SYNC](#) connect module.

In addition to its [KAIMON Kagami sensors](#) and CIES sensors, there are also a [Mineral Scanner](#) and [SachiTech Tech-Scanner](#) available to the pilot.

Electronic Warfare Suite

Mōkin-class 1B are equipped with [Star Army Electronic Warfare Suite, Type 44](#), the [Star Army of Yamatai](#) variant of the [ELECTRA](#) system.

Sorakagami

To better facilitate low-altitude operations and NOE flight courses, the *Mōkin* 1B is equipped with the [Sorakagami Aerospace Operations Suite](#) integrated from the factory.

Umikagami

The *Mōkin*-class Patrol Craft 1B has the [Umikagami Subsurface Operations Suite](#), enabling a range of sub-aquatic applications.

Default Weapons Loadout

- 2 x ["Taihō" Autocannon^{1\)}](#), ([Tier 9, Heavy Anti-Mecha](#), Primary Weapons Array)
- 2 x ["Suzukaze" Mini-Missile Launcher Arrays, 80x250mm](#) (Up to [Tier 8 Medium Anti-Mecha](#) depending on ammunition, Secondary Weapons Array)
- 8 x ["Tachikaze" Point Defense Cannons Type 43](#) ([Tier 6 Heavy Anti-Armor](#), Point Defense)
- [Plasma Projection System^{2\)}](#) (Variable-Tier Multipurpose Weapons System, 2 [Tier-Equivalent Weapons Groups](#), Max DR 7 per weapon)
- Option to have delivery system for [Ke-Z2 Strategic Aether Bomb](#) replace the cargo area, with a

capacity of 16.

OOO Notes

Yuuki created this article on 2022/10/22 17:04. Approved by Wes.

Art by Alex Hart.

It was conceived as sort of the Star Army of Yamatai sci-fi equivalent of the hybrid of a 🇺🇸 Fairchild Republic A-10 Thunderbolt II and a 🇺🇸 Boeing AH-64 Apache.

Products & Items Database	
Product Categories	small craft
Product Name	Mōkin-Class Patrol Craft
Nomenclature	Yu-V1-1B
Manufacturer	Yugumo Corporation , Yugumo Fleetworks
Year Released	YE 44
DR v3 max	Tier 8
Star Army Logistics	
Supply Classification	Class B - SMALL CRAFT
First Used	YE 45

¹⁾ ²⁾

Aether Plasma available

From:
<https://wiki.stararmy.com/> - STAR ARMY

Permanent link:
https://wiki.stararmy.com/doku.php?id=corp:yugumo_corporation:small_craft:moukin-class_patrol_craft_1b

Last update: 2023/12/21 04:21

