

# EM-J4 MARI Series Drone

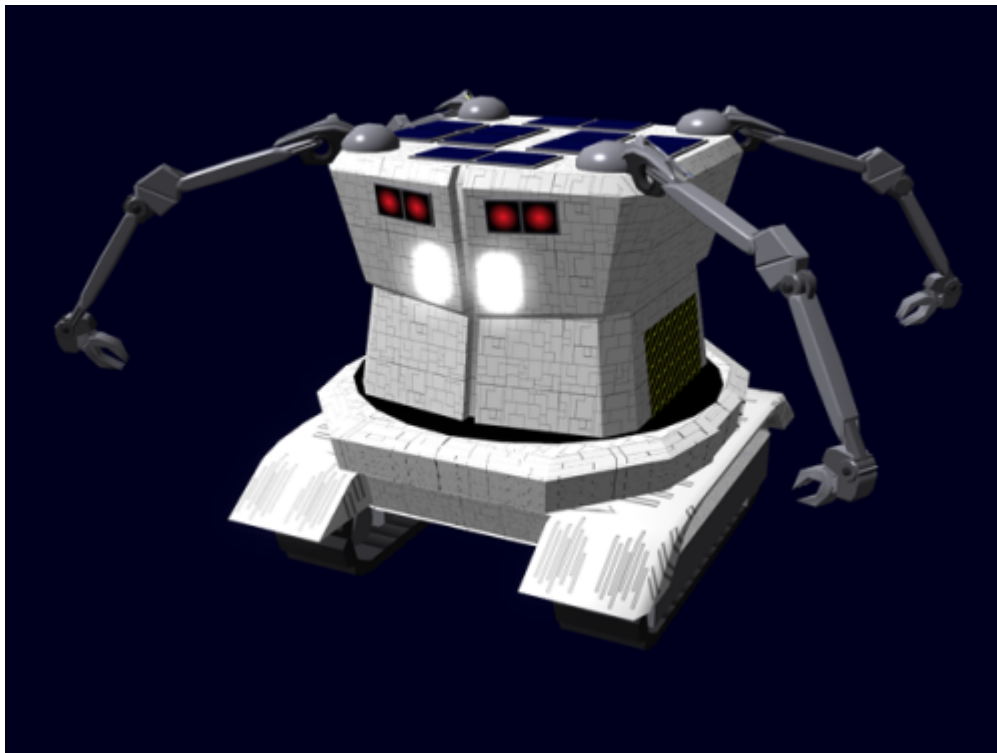
*Emrys Industries*

*A Tamahagane Company*

The Mari series is [Emrys Industries](#) repair and maintenance drone, it became available in [YE 35](#)

## About the EM-J4 Series

The MARI unit is a drone designed to perform routine maintenance and repairs with little to no supervision. It has four retractable arms for performing its tasks. The MARI has a female sounding mechanical voice by default. The primary means of movement is its treads. The MARI is powered by a high capacity rechargeable power cell. The MARI has multiple means of recharging. The MARI currently comes in two models. The term MARI is an acronym for its function Maintenance Assistant Repair and Inspect



## History

The MARI development was an attempt to create an equivalent to the [Zen Armaments "Mobile Spanner" Drone](#). While the [EM-J2 Series Servitor Android](#) can be used in this capacity, its price point makes it less desirable for cost conscious customers. So the EM-J4 was commissioned to be low cost, small profile maintenance unit.

## Appearance

The MARI is a box like drone with two drive units in the form of treads. The drone has optical sensors on both the front and back. A total of four lenses on each side to give it binocular vision. The one distinguishing feature is that on the front of the drone beneath the eyes, there are two lamps.

## Specifications

### Details

Manufacturer: [Emrys Industries](#) Nomenclature: EM-J4 Series

- [EM-J4-1a MARI \(Base\)](#)
- [EM-J4-2a MARI \(Space\)](#)

Type: Maintenance Class: Drone Designer: [Tamahagane Corporation R&D](#) **Price:** 1a 275 / 2a 350 KS

### Dimensions

Height: 2.5 feet Width: 2.25 feet Length: 3.5 feet Mass: 55kg / 110lbs

### Operation

### Damage Rating

See [Damage Rating \(Version 3\)](#) for an explanation of the damage system.

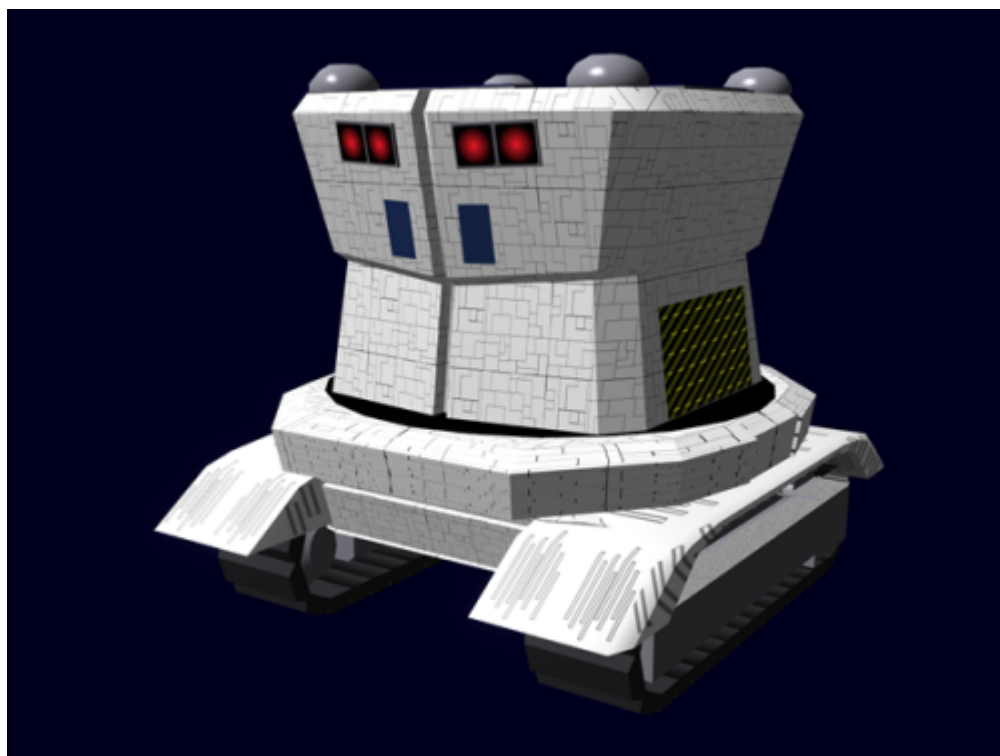
- 2 SP Armor

### Speeds

- Tracks: 0-20 mph
- Anti-grav: 0-5 mph
- Thrusters: 0-10 m/sec<sup>2</sup>

## Systems

The MARI drone may have the following components. The systems are modular which makes repairing the drone easy.



- [EM-J4-A3500 Unibody](#)
- [EM-J4-G3500 Power System](#)
- [EM-J4-E3500 AI](#)
- [EM-J4-E3501 Sensors](#)
- [EM-J4-P3500 Motor System](#)
- [EM-J4-P3501 Anti-Grav](#)
- [EM-J4-P3502 Zero-G package](#)
- [EM-J4-E3500 Compact Graviton Projector](#)
- [EM-J2-E3402 Communications](#)
- [EM-J4-M3500 Arm](#)
- [EM-J4-M3501 Miscellaneous](#)

## Accessories

The following options are available for the EM-J4 Series

- [EM-J4-M3503 Docking Station](#) 50 KS
- [EM-J4-M3502 Basic Tool Kit](#) 150 KS

Products & Items Database	
Product Categories	robots
Product Name	EM-J4 MARI Series Drone
Nomenclature	EM-J4 Series
Manufacturer	<a href="#">Emrys Industries</a>
Price (KS)	275.00 KS

From:

<https://wiki.stararmy.com/> - **STAR ARMY**

Permanent link:

<https://wiki.stararmy.com/doku.php?id=corp:emrys:mari>

Last update: **2023/12/21 00:57**

